

**AEROEX**  
TECHNOLOGIES

# PRODUCT CATALOG

- ✓ EASY INSTALLATION
- ✓ LONG FILTER LIFE
- ✓ MINIMAL MAINTENANCE
- ✓ MADE IN NORTH AMERICA, TRUSTED BY ALL

AEROEX

**MIST-FIT**

**MF-550**



## 20 PLUS YEARS EXPERIENCE IN ENGINEERED CLEAN AIR SOLUTIONS

For us, our values are more than just words - they are the essence of our innovation, commitment, and excellence. With more than 20 years of industry experience, our journey has been marked by continuous growth, driven by our dedication to meeting market demands and delivering superior-quality machines and workmanship. With a team of highly skilled engineers, we possess the knowledge and capability to design customized solutions for virtually any application. At Aeroex Technologies, we remain committed to our founding principles while embracing innovation to ensure cleaner, healthier environments for all.



### NORTH AMERICAN MADE

Units are manufactured in-house at our facilities in the United States and Canada, ensuring the highest standards of quality and craftsmanship.



### INDUSTRIAL

Achieve emission control for your toughest industrial applications.



### COMMERCIAL

Engineered clean air solutions for your commercial space.





## MIST-FIT

- Compact design ideal for confined workspaces
- High-efficiency mist collection
- Durable, long-lasting filters
- Easy installation with minimal disruption
- Maintains clean, healthy air to improve workplace safety and productivity



## MAVERICK

- Designed for superior performance in industrial environments
- Multi-stage fibrebed and HEPA filtration
- Intelligent monitoring
- Flexible mounting options
- Extended filter life



## ARO

- Reduces reliance on replaceable filters
- Superior fluid drainage for optimal performance
- Performs reliably in high-mist environments
- Minimizes maintenance time and costs
- Designed for long-term operational efficiency



## BLOWBOX

- Compact, dual downdraft blow-off station
- Efficient mist capture
- Robust airflow
- Multi-stage filtration
- Powerful motor



## AMBIENT AIR SOLUTIONS

- Compact, portable air filtration systems for localized or central applications
- Deliver high-efficiency filtration solutions
- Dual-stage odor-control
- Single-room portable solutions

## HOW TO MEASURE

- (Length) x (Width) x (Height) x (1 to 2) = (Required CFM) \* Light Mist
- (Length) x (Width) x (Height) x (3 to 4) = (Required CFM) \* Moderate Mist
- (Length) x (Width) x (Height) x (4 to 6) = (Required CFM) \* Heavy Mist and Smoke

When determining the sizing of mist collectors several factors come into play. As a rule of thumb, we suggest multiplying the machine enclosure volume by a factor of 2-6 depending on the mist level - with a factor of 2 suitable for large machines of 1000 cubic feet and above.

## EXAMPLE:

When determining the size of an A lathe with high-pressure coolant with an internal dimension of 5ft high x 6ft deep x 10ft long, resulting in a machine enclosure of 300 cubic feet - a rough estimation suggests an airflow requirement of approximately 900 CFM when multiplied by a factor of 3.



## MIST-FIT: COMPACT, HIGH PERFORMING MIST COLLECTORS

The Mist-Fit is a line of compact yet powerful mist collectors designed to effectively remove harmful airborne particulates such as coolant and oil mist—a common byproduct of machining applications. Mitigate the risks associated with oil mist exposure to your personnel and facility by choosing an Aeroex Mist-Fit mist collector tailored to your unique operational needs.





1. **Mechanical Element:** Separates up to 90% of coolant/oil mist and swarf, draining fluid back to the sump through smooth metal surfaces.
2. **Demister Element:** Supports the first stage, removing up to 95% of mist and swarf with washable filters. 80% up to 5 microns.
3. **Depth Loading Fibrebed Filter:** Rated MERV 15, its depth-loading offers up to 25 times more surface area than standard filters. Outclasses competitors with its thick composition, minimizing blockage and boosting efficiency. Built for longevity with a 1-3 year lifespan. 85% to 95% up to 0.3 microns.
4. **Optional HEPA Filter:** Our optional HEPA filter comes in two variants: 95% efficiency at 0.3 microns or 99.97% at 0.3 microns providing solutions for the most demanding applications. These filters are made with exclusive heavy-duty filter media, ensuring exceptional performance and longevity.
5. **Optional Pre-Filter Box:** Filtration module containing non-consumable mechanical element and demister filters. Recommended for oil and heavy mist, particularly beneficial for Swiss lathes. Significantly extends filter life.

**Optional Carbon Filter Stage:** Activated carbon cells can be added to absorb oil vapors, odors, and light chemical fumes. This stage is especially useful in specialty applications where vapor control and odor reduction are critical, enhancing overall air quality beyond particulate filtration.



## MOUNTING OPTIONS

The Mist-Fit features flexible mounting options for maximum efficiency and customizability in industrial environments. It has a modular design that allows versatile installation in different arrangements and spots, with over 50 machine mount variations ensuring a seamless process.

### DIRECT MOUNT

Suitable for compact spaces, it directly affixes the mist collector to the machine tool, minimizing the spread of airborne contaminants.

### SUSPENDED MOUNT

Ideal for limited floor space or closely located machines, it attaches the collector to the ceiling for centralized collection of rising mist.

### WALL MOUNT

Saves floor space by utilizing vertical space, ideal for smaller spaces or when other mounts are not feasible.

### FLOOR STAND

Offers flexibility by placing the collector on an adjustable stand and connecting it with a suction hose, overcoming obstructions that prevent direct mounting.



MACHINE SPECIFIC MOUNTING AVAILABLE

PEDESTAL



Elevates the collector, ideal for limited floor space and easy maintenance.

SIDE MOUNT



Attaches the collector to the side of the machine, maximizing available vertical space and keeping it near the mist source.

DIRECT MOUNT



Attaches the collector directly to the machine, minimizing contaminant spread in compact environments.

STAND & SUCTION HOSE



Places the collector on a free-standing structure connected by a suction hose, offering flexible positioning and easy relocation as facility or machine needs change.

SPECIFICATION	MF-550	MF-560	MF-750	MF-1050	MF-1950
AIR FLOW	500-600 cfm	500-600 cfm	700-800 cfm	900 - 1100 cfm	1900 - 2000 cfm
MACHINE TOOL ECN. RECOMMENDED VOL.	Up to 250 ft <sup>3</sup>	Up to 250 ft <sup>3</sup>	Up to 400 ft <sup>3</sup>	Up to 450 ft <sup>3</sup>	Up to 2000 ft <sup>3</sup>
MOTOR	0.75hp	0.75hp	1.5hp	1.5hp	3hp
VOLTAGE (AMPS)	115/1/60 (4.9) 220/1/60 (2.5) 230/3/60 (1.57) 460/3/60 (0.95)	115/1/60 (4.9) 220/1/60 (2.5) 230/3/60 (1.57) 460/3/60 (0.95)	230/3/60 (2.7) 460/3/60 (1.6)	230/3/60 (2.7) 460/3/60 (1.6)	230/3/60 (6.0) 460/3/60 (3.3)
INLET CONNECTION (STANDARD)	6" Ø	6" Ø	6" Ø	8" Ø	12" Ø
SOUND	68 dB (A)	68 dB (A)	68 dB (A)	69 dB (A)	72 dB (A)
pH LIMIT	5.8 - 9.8 a	5.8 - 9.8 a	5.8 - 9.8 a	5.8 - 9.8 a	5.8 - 9.8 a
TEMP LIMIT	50°C / 125°F	50°C / 125°F	50°C / 125°F	50°C / 125°F	50°C / 125°F

## MF-550

The Mist-Fit MF-550 mist collector delivers high-performance air purification in a compact, space-saving design — ideal for modern machining environments.

Equipped with progressive multi-stage filtration, including our advanced filterbed filter, the MF-550 effectively captures and removes mist, smoke, and fine particles, ensuring cleaner air and reduced maintenance needs. Engineered for high-pressure applications, it provides consistent, reliable performance even in demanding conditions.

Its lightweight construction allows for flexible placement, while a wide range of over 50 mounting accessories makes installation simple across a variety of machine setups.

Choose the MF-550 for a cleaner, safer, and more efficient workspace — without compromising on performance or footprint.



### PRODUCT SPECS

<b>Air Flow</b>	500-600 cfm
<b>Machine Tool Encl. Recom Volume</b>	Up to 200 ft <sup>3</sup>
<b>Motor</b>	0.75 hp
<b>Voltage (Amps)</b>	115/1/60 (4.9) 220/1/60 (2.5) 230/3/60 (1.57) 460/3/60 (0.95)
<b>Inlet Connection</b>	6"Ø
<b>Sound</b>	68 dB(A)
<b>Coolant</b>	30 - 3000 psi
<b>Oil</b>	30 - 2000 psi
<b>pH limit</b>	5.8 - 9.8

<b>Temp limit</b>	50 °C / 125 °F
<b>Weight</b>	57 lbs
<b>Length</b>	14.9"
<b>Width</b>	14.9"
<b>Height</b>	27.4"
<b>HEPA Filter</b>	Optional

The Mist-Fit offers unmatched versatility with modular designs for optional prefilters and HEPA filters. User-friendly and efficient, easily replaceable filters minimize downtime, saving time and costs.

**REPLACEMENT FILTERS**



**1<sup>ST</sup> STAGE MECHANICAL ELEMENT**  
MF55-F001



**2<sup>ND</sup> STAGE DEMISTER ELEMENT**  
MF55-F002

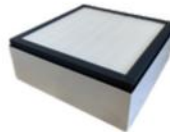


**3<sup>RD</sup> STAGE FIBRE BED FILTER**  
MF55-F007

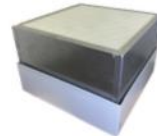


**OPTIONAL 4<sup>TH</sup> STAGE FILTER**  
4" HEPA 95% MF55-F004  
8" HEPA 99.9% MF55-F005

**FILTER KITS**



**HEPA FILTER KIT 4" c/w HEPA FILTER 95%**  
MF55-F011



**HEPA FILTER KIT 8" c/w HEPA FILTER 99.9%**  
MF55-F012



**ODOR-RID FILTER KIT 8" c/w/ ODOR-RID FILTER**  
MF55-F013

**OPTIONAL FILTERS**

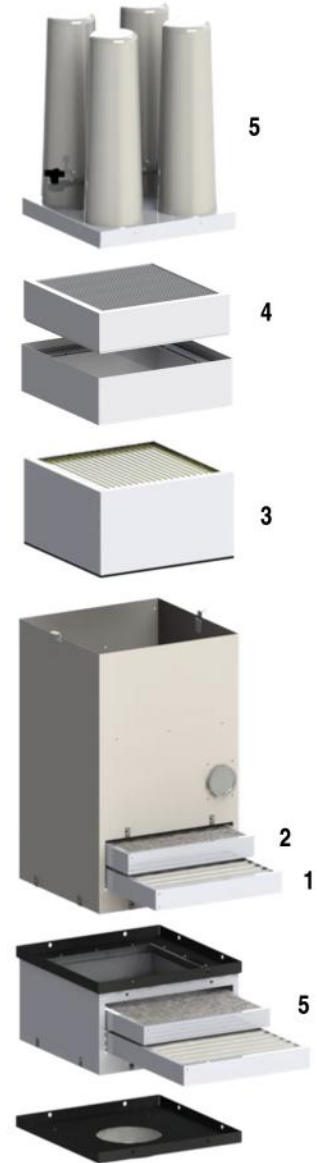


**5<sup>TH</sup> - PRE FILTRATION BOX**  
For Oil and Heavy Mist, recommended for Swiss Screw Machines  
MF55-F014

1<sup>st</sup> Stage Mechanical Element  
2<sup>nd</sup> Stage Demister Element



**CARBON CANISTERS**  
CARB-0018



## MF-560

The Mist-Fit MF-560, designed for high-pressure applications, delivers effective filtration to remove mist and smoke.

With a 20" x 20" size, 96 lbs weight, and over 50 mounting accessories, installation is seamless. The optional Pre-Filtration box extends filter life, especially for Swiss Lathe Screw Machines. Opt for MF-560 for superior mist elimination and optimized machining performance.



### PRODUCT SPECS

Air Flow	500-600 cfm
Machine Tool Enclo. Recom Volume	Up to 250 ft <sup>3</sup>
Motor	0.75 hp
Voltage (Amps)	115/1/60 (4.9)
	220/1/60 (2.5)
	230/3/60 (1.57)
	460/3/60 (0.95)
Inlet Connection	6"Ø
Sound	68 dB(A)
Coolant	30 - 3000 psi
Oil	30 - 2000 psi
pH limit	5.8 - 9.8

Temp limit	50 °C / 125 °F
Weight	86 lbs
Length	18.9"
Width	18.9"
Height	28.8"
HEPA Filter	Optional

The Mist-Fit offers unmatched versatility with modular designs for optional prefilters and HEPA filters. User-friendly and efficient, easily replaceable filters minimize downtime, saving time and costs.

**REPLACEMENT FILTERS**



**1<sup>ST</sup> STAGE MECHANICAL ELEMENT**  
MF10-F001



**2<sup>ND</sup> STAGE DEMISTER ELEMENT**  
MF10-F002

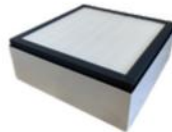


**3<sup>RD</sup> STAGE FIBRE BED FILTER**  
MF10-F007

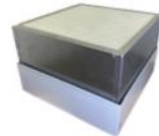


**OPTIONAL 4<sup>TH</sup> STAGE FILTER**  
4" HEPA 95% MF10-F004  
8" HEPA 99.9% MF10-F005

**FILTER KITS**



**HEPA FILTER KIT 4" c/w HEPA FILTER 95%**  
MF10-F011



**HEPA FILTER KIT 8" c/w HEPA FILTER 99.9%**  
MF10-F012



**ODOR-RID FILTER KIT 8" c/w/ ODOR-RID FILTER**  
MF10-F013

**OPTIONAL FILTERS**

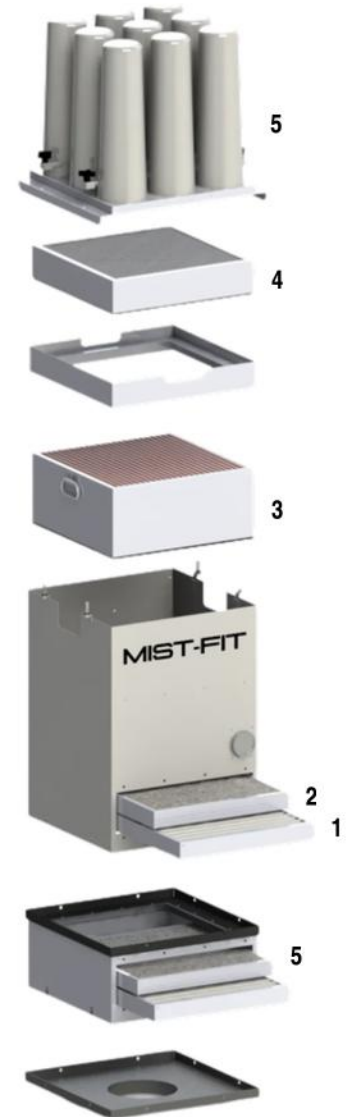


**5<sup>TH</sup> - PRE FILTRATION BOX**  
For Oil and Heavy Mist, recommended for Swiss Screw Machines  
MF10-F014

1<sup>st</sup> Stage Mechanical Element  
2<sup>nd</sup> Stage Demister Element



**CARBON CANISTERS**  
CARB-0018



# MF-750

The Mist-Fit MF-750 mist collector offers top performance in a compact design. With progressive filtration, including a filterbed filter, it ensures clean air and minimal performance.

Suited for high-pressure applications, it eliminates mist and smoke efficiently. It's lightweight and over 50 mounting accessories ensure easy installation.

Opt for MF-750 for a safer, cleaner workspace.



## PRODUCT SPECS

<b>Air Flow</b>	500-600 cfm
<b>Machine Tool Encl. Recom Volume</b>	Up to 200 ft <sup>3</sup>
<b>Motor</b>	1.5 hp
<b>Voltage (Amps)</b>	115/1/60 (4.9) 220/1/60 (2.5) 230/3/60 (1.57) 460/3/60 (0.95)
<b>Inlet Connection</b>	6"Ø
<b>Sound</b>	68 dB(A)
<b>Coolant</b>	30 - 3000 psi
<b>Oil</b>	30 - 2000 psi
<b>pH limit</b>	5.8 - 9.8

<b>Temp limit</b>	50 °C / 125 °F
<b>Weight</b>	63 lbs
<b>Length</b>	14.9"
<b>Width</b>	14.9"
<b>Height</b>	27.4"
<b>HEPA Filter</b>	Optional

The Mist-Fit offers unmatched versatility with modular designs for optional prefilters and HEPA filters. User-friendly and efficient, easily replaceable filters minimize downtime, saving time and costs.

**REPLACEMENT FILTERS**



**1<sup>ST</sup> STAGE MECHANICAL ELEMENT**  
MF55-F001



**2<sup>ND</sup> STAGE DEMISTER ELEMENT**  
MF55-F002

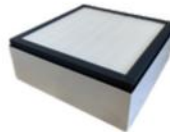


**3<sup>RD</sup> STAGE FIBRE BED FILTER**  
MF55-F007

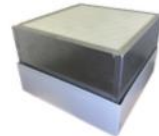


**OPTIONAL 4<sup>TH</sup> STAGE FILTER**  
4" HEPA 95% MF55-F004  
8" HEPA 99.9% MF55-F005

**FILTER KITS**



**HEPA FILTER KIT 4" c/w HEPA FILTER 95%**  
MF55-F011



**HEPA FILTER KIT 8" c/w HEPA FILTER 99.9%**  
MF55-F012



**ODOR-RID FILTER KIT 8" c/w/ ODOR-RID FILTER**  
MF55-F013

**OPTIONAL FILTERS**

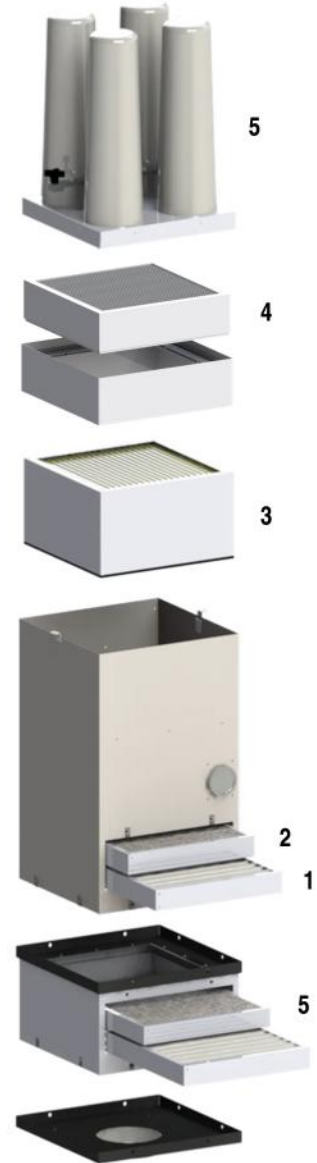


**5<sup>TH</sup> - PRE FILTRATION BOX**  
For Oil and Heavy Mist, recommended for Swiss Screw Machines  
MF55-F014

1<sup>st</sup> Stage Mechanical Element  
2<sup>nd</sup> Stage Demister Element



**CARBON CANISTERS**  
CARB-0018



# MF-1050

The Mist-Fit MF-1050 mist collector offers superior fibrebed filtration for high-pressure applications, removing mist, smoke, and particles.

Delivering 100 cfm airflow and featuring easy installation with 50+ mounting options, its 20"x20", 98 lbs design integrates smoothly.

Opt for MF-1050 for enhanced productivity and a cleaner workspace.



## PRODUCT SPECS

<b>Air Flow</b>	900-1100 cfm
<b>Machine Tool Enclo. Recom Volume</b>	Up to 350 ft <sup>3</sup>
<b>Motor</b>	1.5 hp
<b>Voltage (Amps)</b>	230/3/60 (2.7) 460/3/60 (1.6)
<b>Inlet Connection</b>	8"Ø
<b>Sound</b>	69 dB(A)
<b>Coolant</b>	30 - 3000 psi
<b>Oil</b>	30 - 2000 psi
<b>pH limit</b>	5.8 - 9.8

<b>Temp limit</b>	50 °C / 125 °F
<b>Weight</b>	91 lbs
<b>Length</b>	18.9"
<b>Width</b>	18.9"
<b>Height</b>	28.8"
<b>HEPA Filter</b>	Optional

The Mist-Fit offers unmatched versatility with modular designs for optional prefilters and HEPA filters. User-friendly and efficient, easily replaceable filters minimize downtime, saving time and costs.

**REPLACEMENT FILTERS**



**1<sup>ST</sup> STAGE MECHANICAL ELEMENT**  
MF10-F001



**2<sup>ND</sup> STAGE DEMISTER ELEMENT**  
MF10-F002

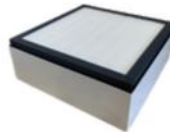


**3<sup>RD</sup> STAGE FIBRE BED FILTER**  
MF10-F007

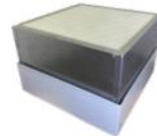


**OPTIONAL 4<sup>TH</sup> STAGE FILTER**  
4" HEPA 95% MF10-F004  
8" HEPA 99.9% MF10-F005

**FILTER KITS**



**HEPA FILTER KIT 4" c/w HEPA FILTER 95%**  
MF10-F011



**HEPA FILTER KIT 8" c/w HEPA FILTER 99.9%**  
MF10-F012



**ODOR-RID FILTER KIT 8" c/w/ ODOR-RID FILTER**  
MF10-F013

**OPTIONAL FILTERS**

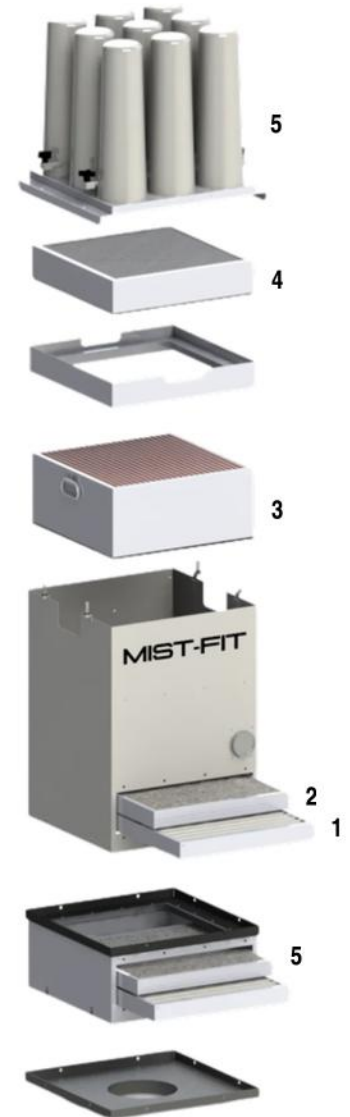


**5<sup>TH</sup> - PRE FILTRATION BOX**  
For Oil and Heavy Mist, recommended for Swiss Screw Machines  
MF10-F014

1<sup>st</sup> Stage Mechanical Element  
2<sup>nd</sup> Stage Demister Element



**CARBON CANISTERS**  
CARB-0018



# MF-1950

The Mist-Fit MF-1950 Mist Collector offers advanced fibrebed filtration for high-pressure applications, efficiently removing mist, smoke and particles.

Delivering 2000 cfm airflow with three filtration stages, it promises clean air, low maintenance, and extended filter life.



## PRODUCT SPECS

<b>Air Flow</b>	1900-2000 cfm
<b>Machine Tool Encl. Recom Volume</b>	Up to 1500 ft <sup>3</sup>
<b>Motor</b>	3 hp
<b>Voltage (Amps)</b>	230/3/60 (6.0) 460/3/60 (3.3)
<b>Inlet Connection</b>	12"Ø
<b>Sound</b>	72 dB(A)
<b>Coolant</b>	30 - 3000 psi
<b>Oil</b>	N/A
<b>pH limit</b>	5.8 - 9.8

<b>Temp limit</b>	50 °C / 125 °F
<b>Weight</b>	175 lbs
<b>Length</b>	24.9"
<b>Width</b>	24.9"
<b>Height</b>	36.7"
<b>HEPA Filter</b>	Optional

The Mist-Fit offers unmatched versatility with modular designs for optional prefilters and HEPA filters. User-friendly and efficient, easily replaceable filters minimize downtime, saving time and costs.

**REPLACEMENT FILTERS**



**1<sup>ST</sup> STAGE MECHANICAL ELEMENT**  
MF19-F001



**2<sup>ND</sup> STAGE DEMISTER ELEMENT**  
MF19-F002

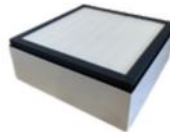


**3<sup>RD</sup> STAGE FIBRE BED FILTER**  
MF19-F007

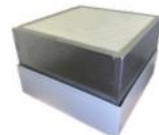


**OPTIONAL 4<sup>TH</sup> STAGE FILTER**  
4" HEPA 95% MF19-F004  
8" HEPA 99.9% MF19-F005

**FILTER KITS**



**HEPA FILTER KIT 4" c/w HEPA FILTER 95%**  
MF19-F011



**HEPA FILTER KIT 8" c/w HEPA FILTER 99.9%**  
MF19-F012



**ODOR-RID FILTER KIT 8" c/w/ ODOR-RID FILTER**  
MF19-F013

**OPTIONAL FILTERS**



**5<sup>TH</sup> - PRE FILTRATION BOX**  
For Oil and Heavy Mist, recommended for Swiss Screw Machines  
MF19-F014

1<sup>st</sup> Stage Mechanical Element  
2<sup>nd</sup> Stage Demister Element



**CARBON CANISTERS**  
CARB-0018



The baseplate stabilizes the Mist-Fit collector, preventing movement or vibration, ensuring efficient mist collection and reducing environmental disruptions.

**BASEPLATES**



**STANDARD**

MF-550 & MF-750  
MF-560 & MF-1050  
MF-1950

MF55-B001  
MF10-B001  
MF19-B001



**KIT FOR SURFACE GRINDER**

MF-550  
Base Only

MF55-A026 (Kit)  
MF55-BD32  
(Base only 4: & 2")



**BLANK**

MF-550 & MF-750  
MF-560 & MF-1050  
MF-1950

MF55-B008  
MF10-B008  
MF19-B008



**BASES WITH OIL DRAINS**

MF-550 & MF-750  
MF-560 & MF-1050  
MF-1950

MF55-BD10  
MF10-BD01  
MF19-BD17



**SIDE MOUNT**

MF-550 & MF-750  
MF-560 & MF-1050  
MF-1950

MF55-B003  
MF10-B003  
MF19-B003



**PLENUM**

MF-550 & MF-750  
MF-560 & MF-1050

MF55-B028  
MF10-B014



**PEDESTAL**

MF-550 & MF-750  
MF-560 & MF-1050

MF55-B004  
MF10-B004



**BASE W/TEE INLET**

MF-1050

MF10-B015

(For high liquid volume or spray cleaning elements.)



**OFF-SET PEDESTAL**

MF-550 & MF-750  
MF-560 & MF-1050

MF55-B005  
MF10-B005



**UNIVERSAL INSTALLATION KIT**

MF-550 & MF-750  
MF-560 & MF-1050  
MF-1950

MF55-A025  
MF10-A024  
MF19-A024

(Baseplate and machine stand sold separately.)

We offer an extensive selection of baseplates designed for seamless integration with leading machine brands and the option to manufacture custom baseplates tailored to your specific requirements:



& MANY MORE!

## INSTALLATION



### SUSPENSION BRACKET

MF-550 & MF-750	MF55-B007
MF-560 & MF-1050	MF10-B007
MF-1950	MF19-B007



### MACHINE STAND

MF-550 & MF-750	MF55-B002
MF-560 & MF-1050	MF10-B002
MF-1950	MF19-B002



### WALL MOUNT

MF-550 & MF-750	MF55-B006
MF-560 & MF-1050	MF10-B006
MF-1950	MF19-B006



### FLOOR STAND ADJUSTABLE 6' - 8'

MF-550 & MF-750	MF55-B219
MF-560 & MF-1050	MF10-B219
MF-1950	MF19-B219

## MISCELLANEOUS



### CHIP STRAINER

MF-550, MF-560 & MF-750	MF55-A097
MF-1050	MF10-A011
MF-1950	MF19-A011



### SUCTION HOSE

MF-550, MF-560 & MF-750	099MPH-0006
MF-1050	099MPH-0008
MF-1950	099MPH-0012



### HOSE CLAMP

MF-550, MF-560 & MF-750	099AHC-0006
MF-1050	099AHC-0008
MF-1950	099AHC-0012



### MACHINE ADAPTER

MF-550, MF-560 & MF-750	099AMS-0006
MF-1050	099AMS-0008
MF-1950	099AMS-0012

## HOOD & CURTAIN

MODEL	HOOD	CURTAIN
MF-550 & MF-750	NOT AVAILABLE	NOT AVAILABLE
MF-560 & MF-1050	MF10-H001	MF10-HC01
MF-1950	MF19-H001	MF19-HC01

## REPLACEMENT PARTS

### MOTORIZED IMPELLER

MODEL	VOLTAGE		
	115/1/60	220/1/60	230/460/3/60
MF-550, MF-560 & MF-750	MF55-M115	MF55-M220	MF55-M460
MF-1050	N/A	N/A	MF10-M460
MF-1950	N/A	N/A	MF19-M460



### STATUS GAUGE

MF-A031

## MAVERICK: THE MIST COLLECTOR BUILT FOR THE TOUGHEST JOBS

The Maverick line is built for the toughest jobs—coolant mist, oil mist, smoke, you name it. Fibrebed filters that last, modular stages for any process, and zero-waste drains, it delivers clean air with minimal maintenance. Built-in drains cut waste, while easy integration, smart monitoring, and status lights make Maverick the most flexible, heavy-duty mist collector on the market.



## FILTER BREAKDOWN

- 1. Mechanical Element:** This stage uses smooth metal surfaces and strategically placed baffle plates to separate up to 90% of heavier oil mist and swarf from the airflow. The separated fluids quickly drain back to the machine sump, reducing waste and preventing premature filter saturation downstream.
- 2. Demister Element:** The Demister Element supports the first stage of filtration, capturing and removing up to 95% of mist and swarf particles. It uses durable, washable filters designed for long-term use, making it a non-consumable solution.
- 3. Third Stage Pleated Depth-Loading Fibrebed Filter:** Building on the previous stage, this filter offers higher efficiency by capturing finer mist and smoke particles. Its advanced depth-loading construction provides a significantly increased surface area compared to standard filters, which improves filtration capacity and helps extend service intervals.
- 4. Fourth Stage Pleated Depth Loading Fiber Bed Filter:** Rated MERV 14, this high-performance filter features a depth-loading design that provides up to 25 times more surface area than standard filters. This increased capacity significantly extends its service life, typically lasting between 2 to 4 years depending on usage and environment.
- 5. Certified HEPA Filter:** This final polishing stage is available in two efficiency options—95% or up to 99.97%—and captures the smallest submicron particles, including mist, smoke, and aerosols. Designed for critical air quality, it ensures the exhaust air meets stringent environmental and safety standards.



## SETTING A NEW STANDARD

The Maverick mist collector is engineered with advanced features to deliver reliable performance and low service needs in the most demanding machining applications.

Designed for ease of use and seamless integration, it combines intelligent digital monitoring, electrical integration, and flexible installation options to optimize filtration efficiency while minimizing downtime and maintenance effort. Below is a detailed breakdown of the key features that set the Maverick apart.

### 1. DIGITAL GAUGES

Equipped with digital gauges featuring 4–20 mA outputs and alarm signals, the system provides real-time monitoring of internal pressure levels for precise feedback on filter condition and airflow efficiency. This enables proactive maintenance and helps prevent unexpected downtime.

### 2. STATUS LIGHTS

Dual-color status lights offer immediate, at-a-glance insight into system performance and maintenance needs, helping operators quickly identify when service is required.

### 3. VERTICAL OR HORIZONTAL SUCTION

Designed for flexibility, the Maverick supports both horizontal inlet connections for duct or hose setups and vertical suction for direct machine mounting, adapting effortlessly to your shop's configuration.

### 4. MOUNTING BASEPLATE

A proprietary mounting baseplate system simplifies machine integration by providing a secure, mechanically compatible platform that ensures stable, vibration-resistant installation.

### 5. ELECTRICAL INTEGRATION KITS

Aeroex offers a range of electrical integration kits that enable automated control of the Maverick mist collector via your machine tool, adding start/stop functionality and safety interlocks even when native machine control is not available.



## FLEXIBLE MOUNTING SOLUTIONS TAILORED TO YOUR WORKSPACE

The Maverick mist collector is designed with versatility in mind, offering multiple mounting options to fit a wide range of shop layouts and operational needs. Whether space is limited, equipment moves frequently, or centralized mist collection is preferred, our adaptable mounting solutions ensure efficient mist capture without disrupting your workflow. Explore the choices that make integrating the Maverick effortless and effective.

### DIRECT MOUNT

Install the mist collector directly on your machine tool. Ideal for compact spaces, it captures mist right at the source, significantly reducing airborne contaminants while providing a clean, integrated appearance that blends seamlessly with your equipment.

### SUSPENDED MOUNT

Suspend the Maverick mist collector from the ceiling or overhead supports. Perfect for saving floor space and suited for both centralized mist collection systems or servicing individual machines.

### WALL MOUNT

Use vertical wall space to free up floor area. This option is great for smaller workshops or where direct or suspended mounting isn't practical.

### STAND AND HOSE

Mount the mist collector on our sturdy pillar stand and connect it to your machine using a suction hose. This setup provides versatile connection options while keeping the collector separate from the machine for easier access and flexible placement.



*Example of a Direct Mount.*

Choose the mounting style that best fits your space and operational goals. By aligning your selection with your facility's layout and workflow, you'll optimize mist collection efficiency while keeping production running smoothly.

SPECIFICATION	MAV-400	MAV-600	MAV-1100	MAV-1400	MAV-2000
Air Flow	350-500 cfm	650-750 cfm	1000-1300 cfm	1400-1700 cfm	1800-2000 cfm
Machine Tool Ecn. Recommended Vol.	Up to 150 ft <sup>3</sup>	Up to 300 ft <sup>3</sup>	Up to 450 ft <sup>3</sup>	Up to 575 ft <sup>3</sup>	Up to 2000 ft <sup>3</sup>
Motor	1 hp	1 hp	2 hp	2hp	3hp
Voltage (Amps)	230/3/60 (3.2) 460/3/60 (1.6) 575/3/60 (1.24)	230/3/60 (3.2) 460/3/60 (1.6) 575/3/60 (1.24)	230/3/60 (5.5) 460/3/60 (2.7) 575/3/60 (6.8)	230/3/60 (5.5) 460/3/60 (2.7) 575/3/60 (2.09)	230/3/60 (7.6) 460/3/60 (3.8) 575/3/60 (2.9)
Inlet Connection	6" θ	8" θ	8" θ	8" θ	12" θ
High Pressure Coolant	✓	✓	✓	✓	✓
Oil	✓	✓	✓	✓	✓
High Pressure Oil	✓	✓	✓	✓	✓
Heavy Smoke	✓	✓	✓	✓	✓
Sound	69 dB(A)	70 dB(A)	70 dB(A)	70 dB(A)	71 dB(A)
pH Limit	5.8 - 12a	5.8 - 12a	5.8 - 12a	5.8 - 9.12a	5.8 - 9.12a
Temp Limit	70°C / 160 °F	70°C / 160 °F	70°C / 160 °F	70°C / 160 °F	70°C / 160 °F

SPECIFICATION	MAV-2500	MAV-4000
Air Flow	500-600 cfm	500-600 cfm
Machine Tool Ecn. Recommended Vol.	Up to 200 ft <sup>3</sup>	Up to 200 ft <sup>3</sup>
Motor	0.75hp	0.75hp
Voltage (Amps)	230/3/60 (11.5) 460/3/60 (5.8) 575/3/60 (4.61)	230/3/60 (17) 460/3/60 (8.5) 575/3/60 (6.78)
Inlet Connection	12" $\theta$	18" $\theta$
High Pressure Coolant	✓	✓
Oil	✓	✓
High Pressure Oil	✓	✓
Heavy Smoke	✓	✓
Sound	74 dB(A)	74 dB(A)
pH Limit	5.8 - 12a	5.8 - 12a
Temp Limit	70°C / 160 °F	70°C / 160 °F

# MAV-400



Demanding applications call for proven performance—whether it’s coolant mist, oil mist, or smoke. The Maverick MAV-400 delivers out of the box with a standard HEPA filter rated at 99.97% efficiency on submicron particles, guaranteeing clean air even under heavy-duty conditions and coolant pressures up to 3000 psi. Its multi-stage fibrebed filtration system extends filter life to 3–5 years (application-dependent), minimizing downtime and service costs. Modular filter stages let you adapt to each process, whether that means adding carbon for fume control or swapping media to match specific needs.

The MAV-400 is designed for seamless integration and proactive maintenance. Choose between horizontal suction or direct mounting with Aeroex’s proprietary baseplate, and connect electrically through machine control logic, standalone panels, or VFDs. Real-time monitoring comes standard with dual digital service gauges, remote outputs, and instant visual status lights—keeping operators ahead of maintenance. The result: long-life, low-maintenance mist collection built to handle the toughest environments.

## PRODUCT SPECS

<b>Air Flow</b>	350-500 cfm
<b>Machine Tool Enclo. Recom Volume</b>	Up to 150 ft <sup>3</sup>
<b>Motor</b>	1 hp
<b>Voltage (Amps)</b>	230/3/60 (3.2)
	460/3/60 (1.6)
	575/3/60 (1.24)
<b>Inlet Connection</b>	6"Ø
<b>Sound</b>	69 dB(A)
<b>pH limit</b>	5.8 - 12

<b>Temp limit</b>	70 °C / 160 °F
<b>Weight</b>	230 lbs
<b>Length</b>	38.7"
<b>Width</b>	25.1"
<b>Height</b>	41.3" (with base feet)
<b>HEPA Filter</b>	Standard
<b>Carbon Filter</b>	Optional

### KEY MAVERICK FEATURES

- Digital Gauges
- Status Lights
- Vertical and Horizontal Suction
- Mounting Baseplate

The Maverick mist collectors offer versatile, easy to install filters for diverse applications including Fibrebed depth loading and HEPA. Quick self-replacement reduces downtime and external maintenance needs. \* Activated carbon and custom media options are also available.

REPLACEMENT FILTERS



**1<sup>ST</sup> STAGE MECHANICAL ELEMENT**  
A06FMS-0001



**2<sup>ND</sup> STAGE "OM#5" OIL MIST FIBRE BED FILTER**  
A06FOM-0005



**3<sup>TH</sup> STAGE "OM#7" OIL MIST FIBRE BED FILTER**  
A06FOM-0007



**4<sup>TH</sup> STAGE "HF" HEPA FILTER**  
95%      600HF-2095  
99.97%    600HF-2099

OPTIONAL FILTERS



**5<sup>th</sup> STAGE CARBON CANISTERS**  
CARB-0018



# MAV-600

The Maverick MAV-600 is built for the toughest environments—coolant mist, oil mist, or smoke. With a standard HEPA filter capturing 99.97% of submicron particles, it delivers clean air out of the box.

Its multi-stage fibrebed filtration system lasts 3–5 years (application-dependent), reducing downtime and replacement costs. Modular filter stages let you add carbon cells or specialized media as needed, while built-in drains return separated coolant or oil directly to your machine. Flexible by design, the MAV-600 supports horizontal suction, direct mounting via Aeroex’s baseplate, and integration with your CNC’s control logic. Standalone panels and VFDs are also available.

Proactive monitoring comes standard with dual service gauges, alarm outputs, and dual-color status lights—ensuring operators always know filter status. The MAV-600 combines HEPA efficiency, long-life filtration, versatile integration, and smart monitoring for low-maintenance, high-performance mist collection.



## PRODUCT SPECS

<b>Air Flow</b>	650-750 cfm
<b>Machine Tool Enclo. Recom Volume</b>	Up to 300 ft <sup>3</sup>
<b>Motor</b>	1 hp
<b>Voltage (Amps)</b>	230/3/60 (3.2) 460/3/60 (1.6) 575/3/60 (1.24)
<b>Inlet Connection</b>	8"Ø
<b>Sound</b>	70 dB(A)
<b>pH limit</b>	5.8 - 12

<b>Temp limit</b>	70 °C / 160 °F
<b>Weight</b>	230 lbs
<b>Length</b>	38.7"
<b>Width</b>	25.1"
<b>Height</b>	41.3" (with base feet)
<b>HEPA Filter</b>	Standard
<b>Carbon Filter</b>	Optional

### KEY MAVERICK FEATURES

- Digital Gauges
- Status Lights
- Vertical and Horizontal Suction
- Mounting Baseplate

The Maverick mist collectors offer versatile, easy to install filters for diverse applications including Fibrebed depth loading and HEPA. Quick self-replacement reduces downtime and external maintenance needs. \* Activated carbon and custom media options are also available.

REPLACEMENT FILTERS



**1<sup>ST</sup> STAGE MECHANICAL ELEMENT**  
A06FMS-0001



**2<sup>ND</sup> STAGE "OM#5" OIL MIST FIBRE BED FILTER**  
A06FOM-0005



**3<sup>TH</sup> STAGE "OM#7" OIL MIST FIBRE BED FILTER**  
A06FOM-0007



**4<sup>TH</sup> STAGE "HF" HEPA FILTER**  
95%     600HF-2095  
99.97%   600HF-2099

OPTIONAL FILTERS



**5<sup>th</sup> STAGE CARBON CANISTERS**  
CARB-0018



# MAV-1100

The Maverick MAV-1100 delivers clean air in the toughest environments—coolant mist, oil mist, or smoke—with a standard HEPA filter capturing 99.97% of submicron particles. Its fibrebed-based multi-stage system extends filter life to 3–5 years, with modular stages for carbon or specialized media as needed.

Designed for flexibility, the MAV-1100 supports horizontal or bottom-suction mounting, plus integration kits for CNC control or standalone panels. Continuous drainage returns coolant or oil to your machine, reducing waste. Digital gauges, alarm outputs, and status lights keep operators informed in real time. With efficiency, adaptability, and long-life filtration, the MAV-1100 is built for low-maintenance, high-performance mist collection.



## KEY MAVERICK FEATURES

- Digital Gauges
- Status Lights
- Vertical and Horizontal Suction
- Mounting Baseplate

## PRODUCT SPECS

<b>Air Flow</b>	1000-1300 cfm
<b>Machine Tool Enclo. Recom Volume</b>	Up to 450 ft <sup>3</sup>
<b>Motor</b>	2 hp
<b>Voltage (Amps)</b>	230/3/60 (5.5) 460/3/60 (2.7) 575/3/60 (2.09)
<b>Inlet Connection</b>	8"Ø
<b>Sound</b>	70 dB(A)
<b>pH limit</b>	5.8 - 12

<b>Temp limit</b>	70 °C / 160 °F
<b>Weight</b>	340 lbs
<b>Length</b>	43.5"
<b>Width</b>	28.6"
<b>Height</b>	46.3" (with base feet)
<b>HEPA Filter</b>	Standard
<b>Carbon Filter</b>	Optional

The Maverick mist collectors offer versatile, easy to install filters for diverse applications including Fibrebed depth loading and HEPA. Quick self-replacement reduces downtime and external maintenance needs. \* Activated carbon and custom media options are also available.

**REPLACEMENT FILTERS**



**1<sup>ST</sup> STAGE MECHANICAL ELEMENT**  
A11FMS-0001



**2<sup>ND</sup> STAGE DEMISTER ELEMENT**  
A11FDE-0002



**3<sup>RD</sup> STAGE "OM#5" OIL MIST FIBRE BED FILTER**  
A11FOM-0005



**4<sup>TH</sup> STAGE "OM#7" OIL MIST FIBRE BED FILTER**  
A11FOM-0007



**5<sup>TH</sup> STAGE 'HF' HEPA FILTER**  
95%                   2000HF-2095  
99.97%              2000HF-2099  
Carbon Canisters   CARB-0018



# MAV-1400



The MAV-1400 is built for demanding environments—coolant mist, oil mist, or smoke. Out of the box, it delivers HEPA-level efficiency (99.97% on submicron particles) for clean air under heavy-duty conditions. Its multi-stage fibrebed filtration lasts 3–5 years, cutting replacement costs. Modular stages let you add carbon cells or swap media for each process, while integrated drains return separated coolant or oil directly to your machine.

Designed for flexible integration, the MAV-1400 offers horizontal or bottom-suction mounting, plus electrical kits for CNC control logic, standalone panels, or VFDs. Digital gauges and status lights provide real-time filter monitoring, keeping maintenance proactive. With efficiency, long life, adaptability, and intelligent controls, the MAV-1400 delivers reliable mist collection with minimal downtime.

## PRODUCT SPECS

<b>Air Flow</b>	1400-1700 cfm
<b>Machine Tool Enclo. Recom Volume</b>	Up to 575 ft <sup>3</sup>
<b>Motor</b>	2 hp
<b>Voltage (Amps)</b>	230/3/60 (5.5) 460/3/60 (2.7) 575/3/60 (2.09)
<b>Inlet Connection</b>	8"Ø
<b>Sound</b>	70 dB(A)
<b>pH limit</b>	5.8 - 12

<b>Temp limit</b>	70 °C / 160 °F
<b>Weight</b>	340 lbs
<b>Length</b>	43.5"
<b>Width</b>	28.6"
<b>Height</b>	46.3" (with base feet)
<b>HEPA Filter</b>	Standard
<b>Carbon Filter</b>	Optional

### KEY MAVERICK FEATURES

- Digital Gauges
- Status Lights
- Vertical and Horizontal Suction
- Mounting Baseplate

The Maverick mist collectors offer versatile, easy to install filters for diverse applications including Fibrebed depth loading and HEPA. Quick self-replacement reduces downtime and external maintenance needs. \* Activated carbon and custom media options are also available.

**REPLACEMENT FILTERS**



**1<sup>ST</sup> STAGE MECHANICAL ELEMENT**  
A11FMS-0001



**2<sup>ND</sup> STAGE DEMISTER ELEMENT**  
A11FDE-0002



**3<sup>RD</sup> STAGE "OM#5" OIL MIST FIBRE BED FILTER**  
A11FOM-0005



**4<sup>TH</sup> STAGE "OM#7" OIL MIST FIBRE BED FILTER**  
A11FOM-0007



**5<sup>TH</sup> STAGE 'HF' HEPA FILTER**  
95%                   2000HF-2095  
99.97%              2000HF-2099  
Carbon Canisters   CARB-0018



# MAV-2000



The Maverick MAV-2000 is built for the toughest mist collection jobs—coolant, oil, or smoke. A standard HEPA filter captures 99.97% of submicron particles, ensuring clean air under heavy-duty conditions.

Its multi-stage fibrebed filtration extends filter life to 3–5 years, reducing replacements and service costs. Modular stages let you add carbon cells or specialized media, while built-in drains return separated coolant or oil directly to your machine. With flexible integration options, the MAV-2000 can be mounted directly or ducted, and connected to machine tool controls or standalone panels. Digital service gauges, alarm outputs, and dual-color status lights enable proactive, real-time monitoring.

In short: maximum efficiency, minimal maintenance, and seamless adaptability for any shop.

## PRODUCT SPECS

Air Flow	1800 - 2000 cfm
Machine Tool Enclo. Recom Volume	Up to 2000 ft <sup>3</sup>
Motor	3 hp
Voltage (Amps)	230/3/60 (7.6)
	460/3/60 (3.8)
	575/3/60 (2.9)
Inlet Connection	12"Ø
Sound	71 dB(A)
pH limit	5.8 - 12

Temp limit	70 °C / 160 °F
Weight	390 lbs
Length	43.5"
Width	29"
Height	52.3" (with base feet)
HEPA Filter	Standard
Carbon Filter	Optional

### KEY MAVERICK FEATURES

- Digital Gauges
- Status Lights
- Vertical and Horizontal Suction
- Mounting Baseplate

The Maverick mist collectors offer versatile, easy to install filters for diverse applications including Fibrebed depth loading and HEPA. Quick self-replacement reduces downtime and external maintenance needs. \* Activated carbon and custom media options are also available.

REPLACEMENT FILTERS



**1<sup>ST</sup> STAGE MECHANICAL ELEMENT**  
A20FMS-0001



**2<sup>ND</sup> STAGE DEMISTER ELEMENT**  
A20FDE-0002



**3<sup>RD</sup> STAGE "OM#5" OIL MIST FIBRE BED FILTER**  
A20FOM-0005



**4<sup>TH</sup> STAGE "OM#7" OIL MIST FIBRE BED FILTER**  
A20FOM-0007



**5<sup>TH</sup> STAGE "HF" HEPA FILTER**  
95%                   2000HF-2095  
99.97%           2000HF-2099  
Carbon Canisters   CARB-0018



# MAV-2500

The Maverick MAV-2500 delivers proven performance in the toughest environments—coolant mist, oil mist, or smoke—thanks to a standard HEPA filter with up to 99.97% efficiency on submicron particles.

Its multi-stage fibrebed filtration extends filter life to 3–5 years and reduces replacements. Modular stages let you tailor filtration with carbon cells or specialized media, and built-in drains return separated coolant or oil to your machine. Flexible integration options include horizontal or bottom suction and electrical kits for CNC automation, or standalone control with panels and VFDs. Real-time monitoring via digital gauges and dual-color status lights keeps maintenance proactive.

The MAV-2500 combines HEPA-level efficiency, long-life filtration, adaptable configuration, seamless integration, and smart monitoring for low-maintenance, high-performance mist collection.



## PRODUCT SPECS

<b>Air Flow</b>	2300-2700 cfm
<b>Machine Tool Enclo. Recom Volume</b>	Up to 3000 ft <sup>3</sup>
<b>Motor</b>	5 hp
<b>Voltage (Amps)</b>	230/3/60 (11.5)
	460/3/60 (5.8)
<b>Inlet Connection</b>	12"Ø
<b>Sound</b>	74 dB(A)
<b>pH limit</b>	5.8 - 12

<b>Temp limit</b>	70 °C / 160 °F
<b>Weight</b>	605 lbs
<b>Length</b>	52.1"
<b>Width</b>	24.6"
<b>Height</b>	50.6"
<b>HEPA Filter</b>	Standard
<b>Carbon Filter</b>	Optional

## KEY MAVERICK FEATURES

- Digital Gauges
- Status Lights
- Vertical and Horizontal Suction
- Mounting Baseplate

The Maverick mist collectors offer versatile, easy to install filters for diverse applications including Fibrebed depth loading and HEPA. Quick self-replacement reduces downtime and external maintenance needs. \* Activated carbon and custom media options are also available.

**REPLACEMENT FILTERS**



**1<sup>ST</sup> STAGE MECHANICAL ELEMENT**  
A20FMS-0001



**2<sup>ND</sup> STAGE DEMISTER ELEMENT**  
A20FDE-0002



**3<sup>RD</sup> STAGE "OM#5" OIL MIST FIBRE BED FILTER**  
A20FOM-0005



**4<sup>TH</sup> STAGE "OM#7" OIL MIST FIBRE BED FILTER**  
A20FOM-0007



**5<sup>TH</sup> STAGE 'HF' HEPA FILTER**  
95%                   2000HF-2095  
99.97%             2000HF-2099  
Carbon Canisters   CARB-0018



# MAV-4000



The MAV-4000 delivers proven mist collection in the toughest environments—handling coolant mist, oil mist, and smoke with HEPA-level efficiency (99.97% on submicron particles). Its multi-stage fibrebed filtration lasts 3–5 years (application-dependent), cutting downtime and replacement costs. Modular stages let you add carbon cells or specialized media as needed, while built-in drains return coolant or oil directly to your machine.

For integration, choose horizontal or bottom-suction mounting, plus flexible electrical options—from CNC control logic kits to standalone panels and VFDs. Digital service gauges, alarm outputs, and dual-color status lights keep maintenance proactive with real-time monitoring.

In short: the MAV-4000 combines efficiency, long-life filtration, adaptability, flexible integration, and smart monitoring—delivering clean air with minimal maintenance.

## PRODUCT SPECS

<b>Air Flow</b>	3400-4100 cfm
<b>Machine Tool Enclo. Recom Volume</b>	Up to 4000 ft <sup>3</sup>
<b>Motor</b>	7.5 hp
<b>Voltage (Amps)</b>	230/3/60 (17)
	460/3/60 (8.5)
	575/3/60 (6.78)
<b>Inlet Connection</b>	18"Ø
<b>Sound</b>	74 dB(A)
<b>pH limit</b>	5.8 - 12

<b>Temp limit</b>	70 °C / 160 °F
<b>Weight</b>	1200 lbs
<b>Length</b>	73.4"
<b>Width</b>	24.5"
<b>Height</b>	81.4"
<b>HEPA Filter</b>	Standard
<b>Carbon Filter</b>	Optional

### KEY MAVERICK FEATURES

- Digital Gauges
- Status Lights
- Vertical and Horizontal Suction
- Mounting Baseplate

The Maverick mist collectors offer versatile, easy to install filters for diverse applications including Fibrebed depth loading and HEPA. Quick self-replacement reduces downtime and external maintenance needs. \* Activated carbon and custom media options are also available.

REPLACEMENT FILTERS



**1<sup>ST</sup> STAGE MECHANICAL ELEMENT**  
A20FMS-0001



**2<sup>ND</sup> STAGE DEMISTER ELEMENT**  
A20FDE-0002



**3<sup>RD</sup> STAGE "OM#5" OIL MIST FIBRE BED FILTER**  
A20FOM-0005



**4<sup>TH</sup> STAGE "OM#7" OIL MIST FIBRE BED FILTER**  
A20FOM-0007



**5<sup>TH</sup> STAGE 'HF' HEPA FILTER**  
95%                    2000HF-2095  
99.97%              2000HF-2099  
Carbon Canisters   CARB-0018



INSTALLATION



**SUSPENSION BRACKET**

MAV 400 & MAV 600 099AMW-0001  
 MAV 1100 & MAV 1400 099AMW-0002  
 MAV 2000 099AMW-0003



**INSTALLATION KIT**

MAV 400 099AKI-0001  
 MAV 600 & MAV 1100 099AKI-0002  
 MAV 1400 099AKI-0003  
 MAV 2000 & MAV 2500 099AKI-0004



**STAND**

32" Tall Powder coated black  
 Only for MAV 4000  
 099AMP-0004



**WALL MOUNT**

MAV 400 & MAV 600 099AMW-0001  
 MAV 1100 & MAV 1400 099AMW-0002  
 MAV 2000 099AMW-0003



**PILLAR STAND**

MAV 400 & MAV 600 099AMP-0061  
 MAV 1100, MAV 1400 & MAV 2000 099AMP-0062  
 MAV 2500 099AMP-0063

MISCELLANEOUS



**CHIP STRAINER**

MAV 400 & MAV 600 099ACS-0002  
 MAV 1100 099ACS-0005  
 MAV 1400 099ACS-0006  
 MAV 2000 & MAV 2500 099ACS-0007



**SUCTION HOSE**

MAV 400 099MPH-0006  
 MAV 600 & MAV 1100 099MPH-0008  
 MAV 1400 099MPH-0010  
 MAV 2000 & MAV 2500 099MPH-0012



**HOSE CLAMP**

MAV 400 099AHC-0006  
 MAV 600 & MAV 1100 099AHC-0008  
 MAV 1400 099AHC-0010  
 MAV 2000 & MAV 2500 099AHC-0012



**MACHINE ADAPTER**

MAV 400 099AMS-0006  
 MAV 600 & MAV 1100 099AMS-0008  
 MAV 1400 099AMS-0010  
 MAV 2000 & MAV 2500 099AMS-0012



**WIRE KIT**

MAV 400 & MAV 600 099EMS-E001  
 MAV 1100 & MAV 1400 099EMS-E002  
 MAV 2000 099EMS-E003  
 MAV 2500 099EMS-E004  
 MAV 4000 099EMS-E005

REPLACEMENT PARTS

**MOTOR**

MODEL	VOLTAGE	
	230/460/3/60	575/3/360
MAV 400 / 600	099EMT-0002	099EMT-0003
MAV 1100/1400	099EMT-0010	099EMT-0011
MAV 2000	099EMT-0006	099EMT-0007
MAV 2500/4000	099EMT-0008	099EMT-0009



**IMPELLER**

MAV 400 A04IMP-001  
 MAV 600 & MAV 1100 A06IMP-001  
 MAV 1400 & MAV 2000 A14IM0-001  
 MAV 2500 & MAV 4000 A25IMP-001



**INLET CONE**

MAV 400 A04CON-0001  
 MAV 600 & MAV 1100 A06CON-0001  
 MAV 1400 & MAV 2000 A14CON-0001  
 MAV 2500 & MAV 4000 A25CON-0001



**DIGITAL GAUGE**

MAV-A031  
 MAV 2500 & MAV 4000 receive primary and HEPA status gauge

## ARO: EFFICIENT AND DURABLE, IDEAL FOR INDUSTRIAL ENVIRONMENTS

The ARO industrial mist collector offers a unique design that minimizes reliance on replaceable filters while ensuring superior fluid drainage. Perfect for high-mist environments, the ARO provides exceptional air quality, minimal maintenance, and cost-effectiveness throughout its lifecycle.



Introducing the ARO of premium mist collectors by Aeroex Technologies Inc. - a breakthrough in extended filter life, operational savings, and superior air purification. Expertly crafted for oil mist collection and smoke elimination, the ARO ensures a safer workspace and shields equipment from oil mist and smoke damage.

**Versatility & Adaptability:**

ARO is a game-changer in air purification, offering customizable filtration stages for diverse industrial needs. From metalworking and food production to machining operations, ARO goes beyond regulatory benchmarks<sup>1</sup> setting a new gold standard.



1. **Mechanical Element:** Features a washable metal surface, separating 90% of oil mist and swart for drainage. With a 20-year durability, it prevents clogging in subsequent filters by handling larger particles. Non Consumable.
2. **Demister Element:** Supports the first stage, removing up to 95% of mist and swart with washable filters. Non Consumable.
3. **Third Stage Pleated Depth Loading Fiber Bed Filter:** Rated MERV 13, Outclasses thin competitors with its thick composition, minimizing blockage and boosting efficiency. Built for longevity with a 1-3 year lifespan.
4. **Fourth Stage Pleated Depth Loading Fiber Bed Filter:** Rated MERV 14, its depth-loading offers 25 times more surface area than standard filters, extending life between 1 to 3 years.
5. **HEPA Filter:** Captures 99.97% of submicron particles, including mist and smoke, ensuring pure air output. Reliable with a 2-4 year service life.



The ARO mist collectors offer versatile mounting options tailored for the CNC market:

**DIRECT MOUNT**

Attach directly to the machine tool. Ideal for compact spaces, it captures mist right at its source, minimizing airborne contaminants.

**SUSPENDED MOUNT**

Mount on the ceiling or overhead, perfect for tight floor spaces or centralized collection for multiple machines.

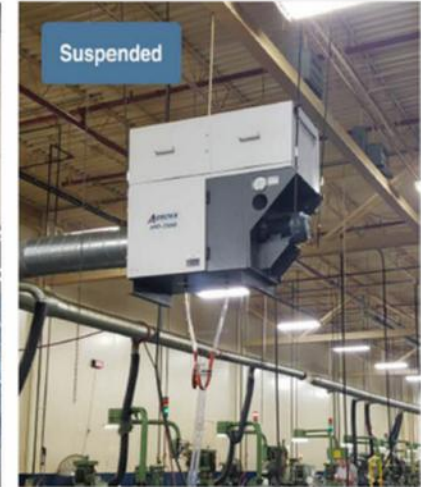
**WALL MOUNT**

Save floor space by utilizing vertical wall areas. Suitable for smaller workshops or when other mounts aren't feasible.

**STAND AND HOSE**

Positioned on a stand with a suction hose, this flexible option caters to changing layouts or mobile mist sources.

Choose based on your space and efficiency needs, ensuring optimal mist collection.



Specification	ARO-400	ARO-600	ARO-1100	ARO-1400	ARO-2000	ARO-2500	ARO-4000
Air Flow	350-500 cfm	650-750 cfm	1000-1300 cfm	1400-1700 cfm	1800-1700 cfm	2300-2700 cfm	3400-4100 cfm
Machine Tool Ecn. Recommended Vol.	Up to 150 ft <sup>3</sup>	Up to 300 ft <sup>3</sup>	Up to 450 ft <sup>3</sup>	Up to 575 ft <sup>3</sup>	Up to 2000 ft <sup>3</sup>	Up to 3000 ft <sup>3</sup>	Up to 4000 ft <sup>3</sup>
Motor	1 hp	1 hp	2 hp	2 hp	3 hp	5 hp	7.5 hp
Voltage(Amps)	230/3/60 (3.2) 460/3/60 (1.3) 575/3/60 (1.24)	230/3/60 (3.2) 460/3/60 (1.3) 575/3/60 (1.24)	230/3/60 (5.5) 460/3/60 (2.7) 575/3/60 (2.09)	230/3/60 (5.5) 460/3/60 (2.7) 575/3/60 (2.09)	230/3/60 (7.6) 460/3/60 (3.3) 575/3/60 (2.9)	230/3/60 (11.5) 460/3/60 (5.8) 575/3/60 (4.61)	230/3/60 (17) 460/3/60 (8.5) 575/3/60 (6.78)
Inlet Connection (standard)	6" Ø	8" Ø	8" Ø	10" Ø	12" Ø	12" Ø	18" Ø
Sound	69 dB(A)	70 dB(A)	71 dB(A)	72 dB(A)	71 dB(A)	74 dB(A)	74 dB(A)
High Pressure Coolant	✓	✓	✓	✓	✓	✓	✓
High Pressure Oil	✓	✓	✓	✓	✓	✓	✓
Heavy Smoke	✓	✓	✓	✓	✓	✓	✓
pH limit	5.8 - 12a	5.8 - 12a	5.8 - 12a	5.8 - 12a	5.8 - 12a	5.8 - 12a	5.8 - 12a
Temp limit	70°C / 160 °F	70°C / 160 °F	70°C / 160 °F	70°C / 160 °F	70°C / 160 °F	70°C / 160 °F	70°C / 160 °F

# ARO-400



The ARO-400 delivers advanced multi-stage mist separation with a unique cross-flow design that minimizes clogging and extends filter life.

Built for continuous operation, it efficiently removes mist and smoke in high-pressure environments. Its sequential separation stages optimize air purification while reducing maintenance needs.

Choose the ARO-400 for top-tier mist collection.

## PRODUCT SPECS

<b>Air Flow</b>	350-500 cfm
<b>Machine Tool Enclo. Recom Volume</b>	Up to 150 ft <sup>3</sup>
<b>Motor</b>	1 hp
<b>Voltage (Amps)</b>	230/3/60 (3.2)
	460/3/60 (1.6)
	575/3/60 (1.24)
<b>Inlet Connection</b>	6"Ø
<b>Sound</b>	69 dB(A)
<b>pH limit</b>	5.8 - 12

<b>Temp limit</b>	70 °C / 160 °F
<b>Weight</b>	230 lbs
<b>Length</b>	21" frame, 32" overall
<b>Width</b>	21"
<b>Height</b>	36"
<b>HEPA Filter</b>	Standard
<b>Carbon Filter</b>	Optional

The ARO mist collectors offer versatile, easy-to-install filters for diverse applications, including HEPA and activated carbon. Quick self-replacement reduces downtime and external maintenance needs.

**REPLACEMENT FILTERS**



**1<sup>ST</sup> STAGE MECHANICAL ELEMENT**  
**A06FMS-0001**



**2<sup>ND</sup> STAGE "OM#5" OIL MIST FIBRE BED FILTER**  
**A06FOM-0005**



**3<sup>TH</sup> STAGE "OM#7" OIL MIST FIBRE BED FILTER**  
**A06FOM-0007**



**4<sup>TH</sup> STAGE "HF" HEPA FILTER**  
 95% **600HF-2095**  
 99.97% **600HF-2099**

**OPTIONAL FILTERS**



**5<sup>th</sup> STAGE CARBON CANISTERS**  
**CARB-0018**



# ARO-600

The ARO-600 Mist Collector from Aeroex Technologies is a compact, multi-stage system designed for 650–750 CFM airflow and machine enclosures up to 200 ft<sup>3</sup>.

Its unique design provides progressive mist separation and efficient drainage, reducing filter clogs and extending service life.

Built for high-pressure coolant and oil applications, the ARO-600 effectively removes mist and smoke, ensuring a cleaner, safer, and more productive workspace.



## PRODUCT SPECS

<b>Air Flow</b>	650-750 cfm
<b>Machine Tool Enclo. Recom Volume</b>	Up to 300 ft <sup>3</sup>
<b>Motor</b>	1 hp
<b>Voltage (Amps)</b>	230/3/60 (3.2)
	460/3/60 (1.6)
	575/3/60 (1.24)
<b>Inlet Connection</b>	8"Ø
<b>Sound</b>	70 dB(A)
<b>pH limit</b>	5.8 - 12

<b>Temp limit</b>	70 °C / 160 °F
<b>Weight</b>	230 lbs
<b>Length</b>	21" frame, 43" overall
<b>Width</b>	21"
<b>Height</b>	41"
<b>HEPA Filter</b>	Standard
<b>Carbon Filter</b>	Optional

The ARO mist collectors offer versatile, easy-to-install filters for diverse applications, including HEPA and activated carbon. Quick self-replacement reduces downtime and external maintenance needs.

**REPLACEMENT FILTERS**



**1<sup>ST</sup> STAGE MECHANICAL ELEMENT**  
**A06FMS-0001**



**2<sup>ND</sup> STAGE "OM#5" OIL MIST FIBRE BED FILTER**  
**A06FOM-0005**



**3<sup>TH</sup> STAGE "OM#7" OIL MIST FIBRE BED FILTER**  
**A06FOM-0007**



**4<sup>TH</sup> STAGE "HF" HEPA FILTER**  
 95% **600HF-2095**  
 99.97% **600HF-2099**

**OPTIONAL FILTERS**



**5<sup>TH</sup> STAGE CARBON CANISTERS**  
**CARB-0018**



# ARO-1100



Aeroex Technologies' ARO-1100 Mist Collector is built for medium-sized machine tools, using a multi-stage filtration process with depth-loading filters to minimize clogging and ensure reliable 24/7 operation.

Its cross-flow design, optimized for high-pressure environments, efficiently removes mist and smoke.

Designed for 1,000–1,300 CFM airflow and 450 enclosures, the ARO-1100 delivers superior mist collection and a pristine workspace.

## PRODUCT SPECS

<b>Air Flow</b>	1100-1300 cfm
<b>Machine Tool Enclo. Recom Volume</b>	Up to 450 ft <sup>3</sup>
<b>Motor</b>	2 hp
<b>Voltage (Amps)</b>	230/3/60 (5.5) 460/3/60 (2.7) 575/3/60 (2.09)
<b>Inlet Connection</b>	8"Ø
<b>Sound</b>	71 dB(A)
<b>pH limit</b>	5.8 - 12

<b>Temp limit</b>	70 °C / 160 °F
<b>Weight</b>	230 lbs
<b>Length</b>	25" frame, 49" overall
<b>Width</b>	25"
<b>Height</b>	42"
<b>HEPA Filter</b>	Standard
<b>Carbon Filter</b>	Optional

The ARO mist collectors offer versatile, easy-to-install filters for diverse applications, including HEPA and activated carbon. Quick self-replacement reduces downtime and external maintenance needs.

**REPLACEMENT FILTERS**



**1<sup>ST</sup> STAGE MECHANICAL ELEMENT**  
A11FMS-0001



**2<sup>ND</sup> STAGE DEMISTER ELEMENT**  
A11FDE-0002



**3<sup>RD</sup> STAGE "OM#5" OIL MIST FIBRE BED FILTER**  
A11FOM-0005



**4<sup>TH</sup> STAGE "OM#7" OIL MIST FIBRE BED FILTER**  
A11FOM-0007



**5<sup>TH</sup> STAGE "HF" HEPA FILTER**  
95%                   2000HF-2095  
99.97%             2000HF-2099  
Carbon Canisters   CARB-0018



# ARO-1100



The ARO-1400 Mist Collector from Aeroex Technologies is designed for medium-sized machine tools, handling 1,400–1,700 CFM airflow and 575 ft³ enclosures.

Its multi-stage filtration process minimizes filter clogging and enables continuous 24/7 operation. The cross-flow design is optimized for high-pressure applications, efficiently removing mist and smoke.

With distinct separation stages, the ARO-1400 guarantees reliable performance, clean air, and long service life.

## PRODUCT SPECS

<b>Air Flow</b>	1100-1300 cfm
<b>Machine Tool Enclo. Recom Volume</b>	Up to 575 ft³
<b>Motor</b>	2 hp
<b>Voltage (Amps)</b>	230/3/60 (5.5) 460/3/60 (2.7) 575/3/60 (2.09)
<b>Inlet Connection</b>	10"Ø
<b>Sound</b>	72 dB(A)
<b>pH limit</b>	5.8 - 12

<b>Temp limit</b>	70 °C / 160 °F
<b>Weight</b>	340 lbs
<b>Length</b>	25" frame, 49" overall
<b>Width</b>	25"
<b>Height</b>	42"
<b>HEPA Filter</b>	Standard
<b>Carbon Filter</b>	Optional

The ARO mist collectors offer versatile, easy-to-install filters for diverse applications, including HEPA and activated carbon. Quick self-replacement reduces downtime and external maintenance needs.

**REPLACEMENT FILTERS**



**1<sup>ST</sup> STAGE MECHANICAL ELEMENT**  
A11FMS-0001



**2<sup>ND</sup> STAGE DEMISTER ELEMENT**  
A11FDE-0002



**3<sup>RD</sup> STAGE "OM#5" OIL MIST FIBRE BED FILTER**  
A11FOM-0005



**4<sup>TH</sup> STAGE "OM#7" OIL MIST FIBRE BED FILTER**  
A11FOM-0007



**5<sup>TH</sup> STAGE 'HF' HEPA FILTER**  
95%                    2000HF-2095  
99.97%                2000HF-2099  
Carbon Canisters    CARB-0018



# ARO-2000



Aeroex Technologies' ARO-2000 Mist Collector is engineered for large machine tools and central systems. With an airflow capacity of 1,800–2,200 CFM and compatibility with 2,000 H<sup>3</sup> enclosures, it delivers reliable performance for demanding applications.

Its multi-stage filtration process reduces filter clogging, enabling true 24/7 operation. The cross-flow design is ideal for high-pressure coolant environments, efficiently eliminating mist and smoke. Thanks to its unique separation stages, the ARO-2000 provides superior mist collection and ensures a cleaner, safer workspace.

## PRODUCT SPECS

<b>Air Flow</b>	1800-2000 cfm
<b>Machine Tool Enclo. Recom Volume</b>	Up to 2000 ft <sup>3</sup>
<b>Motor</b>	3 hp
<b>Voltage (Amps)</b>	230/3/60 (7.6) 460/3/60 (3.8) 575/3/60 (2.9)
<b>Inlet Connection</b>	12"Ø
<b>Sound</b>	72 dB(A)
<b>pH limit</b>	5.8 - 12

<b>Temp limit</b>	70 °C / 160 °F
<b>Weight</b>	390 lbs
<b>Length</b>	25" frame, 50" overall
<b>Width</b>	25"
<b>Height</b>	49"
<b>HEPA Filter</b>	Standard
<b>Carbon Filter</b>	Optional

The ARO mist collectors offer versatile, easy-to-install filters for diverse applications, including HEPA and activated carbon. Quick self-replacement reduces downtime and external maintenance needs.

**REPLACEMENT FILTERS**



**1<sup>ST</sup> STAGE MECHANICAL ELEMENT**  
A11FMS-0001



**2<sup>ND</sup> STAGE DEMISTER ELEMENT**  
A11FDE-0002



**3<sup>RD</sup> STAGE "OM#5" OIL MIST FIBRE BED FILTER**  
A11FOM-0005



**4<sup>TH</sup> STAGE "OM#7" OIL MIST FIBRE BED FILTER**  
A11FOM-0007



**5<sup>TH</sup> STAGE 'HF' HEPA FILTER**  
95%                   2000HF-2095  
99.97%             2000HF-2099  
Carbon Canisters   CARB-0018



# ARO-2500



Aeroex Technologies' ARO-2500 Mist Collector is built for large machine tools and central systems. Its multi-stage process efficiently separates mist, reducing filter clogging and maintenance. Depth-loading filters and a cross-flow design ensure reliable 24/7 operation, even in high-pressure coolant environments.

Capable of handling 2,300–2,700 CFM airflow and enclosures up to 3,000 ft<sup>2</sup>, the ARO-2500 effectively removes mist and smoke, delivering clean air and a pristine workspace. Trust the ARO-2500 for powerful mist collection and long-term performance.

## PRODUCT SPECS

<b>Air Flow</b>	2300-2700 cfm
<b>Machine Tool Enclo. Recom Volume</b>	Up to 3000 ft <sup>3</sup>
<b>Motor</b>	5 hp
<b>Voltage (Amps)</b>	230/3/60 (11.5) 460/3/60 (5.8) 575/3/60 (4.61)
<b>Inlet Connection</b>	12"Ø
<b>Sound</b>	74 dB(A)
<b>pH limit</b>	5.8 - 12

<b>Temp limit</b>	70 °C / 160 °F
<b>Weight</b>	605 lbs
<b>Length</b>	55" frame
<b>Width</b>	25"
<b>Height</b>	50"
<b>HEPA Filter</b>	Standard
<b>Carbon Filter</b>	Optional

The ARO mist collectors offer versatile, easy-to-install filters for diverse applications, including HEPA and activated carbon. Quick self-replacement reduces downtime and external maintenance needs.

**REPLACEMENT FILTERS**



**1<sup>ST</sup> STAGE MECHANICAL ELEMENT**  
A20FMS-0001



**2<sup>ND</sup> STAGE DEMISTER ELEMENT**  
A20FDE-0002



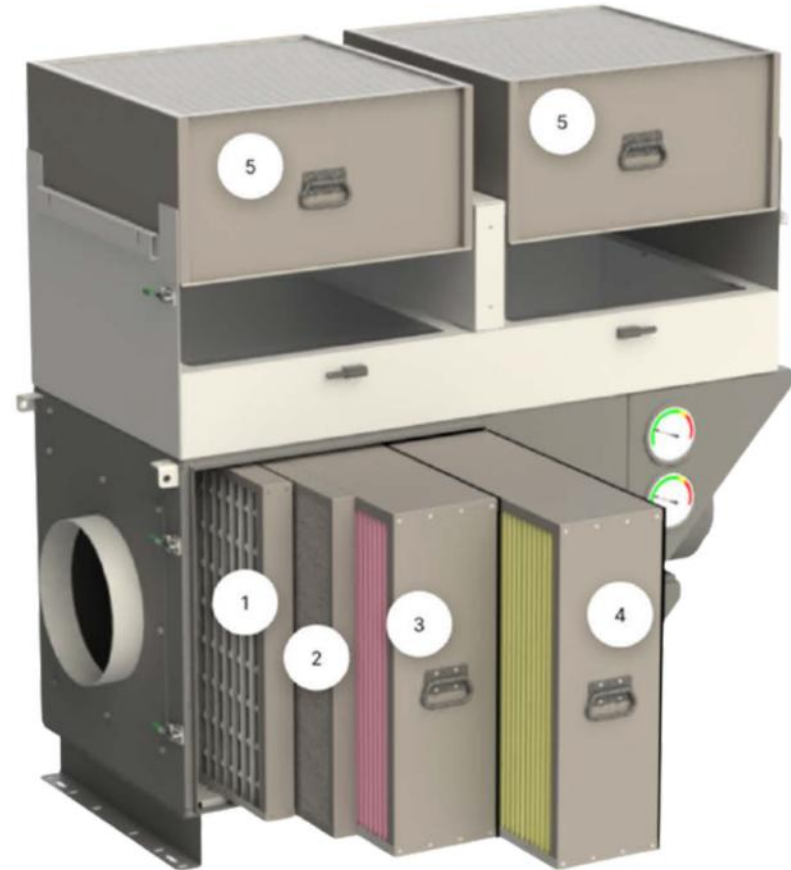
**3<sup>RD</sup> STAGE "OM#5" OIL MIST FIBRE BED FILTER**  
A20FOM-0005



**4<sup>TH</sup> STAGE "OM#7" OIL MIST FIBRE BED FILTER**  
A20FOM-0007



**5<sup>TH</sup> STAGE 'HF' HEPA FILTER**  
95%                    2000HF-2095  
99.97%                2000HF-2099  
Carbon Canisters    CARB-0018



# ARO-4000



Aeroex Technologies' ARO-4000 Mist Collector is engineered for large machine tools and central systems. Its multi-stage process efficiently reduces filter clogging, while depth-loading filters support continuous 24/7 operation. The cross-flow design is optimized for high-pressure coolant applications.

With distinct separation stages, the ARO-4000 removes mist and smoke, delivers 3,400–4,100 CFM airflow, and effectively handles enclosures up to 4,000 ft<sup>3</sup>. Rely on the ARO-4000 for superior mist collection and a cleaner, safer workspace.

## PRODUCT SPECS

<b>Air Flow</b>	3400-4100 cfm
<b>Machine Tool Enclo. Recom Volume</b>	Up to 4000 ft <sup>3</sup>
<b>Motor</b>	7.5 hp
<b>Voltage (Amps)</b>	230/3/60 (17) 460/3/60 (8.5) 575/3/60 (6.78)
<b>Inlet Connection</b>	12"Ø
<b>Sound</b>	74 dB(A)
<b>pH limit</b>	5.8 - 12

<b>Temp limit</b>	70 °C / 160 °F
<b>Weight</b>	1200 lbs
<b>Length</b>	74" frame
<b>Width</b>	25"
<b>Height</b>	79"
<b>HEPA Filter</b>	Standard
<b>Carbon Filter</b>	Optional

The ARO mist collectors offer versatile, easy-to-install filters for diverse applications, including HEPA and activated carbon. Quick self-replacement reduces downtime and external maintenance needs.

**REPLACEMENT FILTERS**



**1<sup>ST</sup> STAGE MECHANICAL ELEMENT**  
A20FMS-0001



**2<sup>ND</sup> STAGE DEMISTER ELEMENT**  
A20FDE-0002



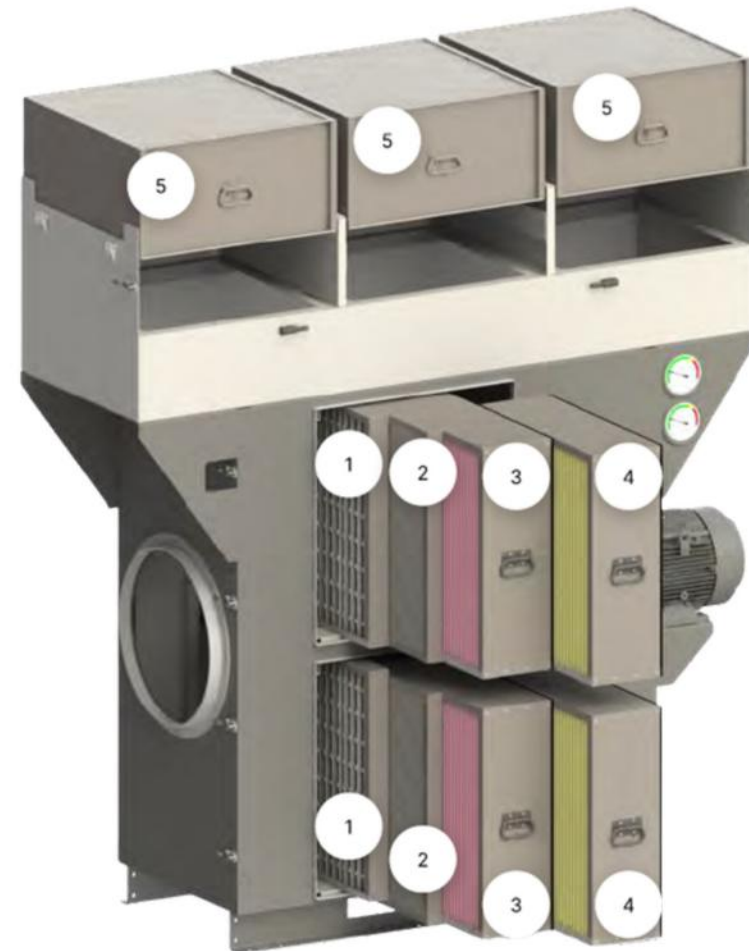
**3<sup>RD</sup> STAGE "OM#5" OIL MIST FIBRE BED FILTER**  
A20FOM-0005



**4<sup>TH</sup> STAGE "OM#7" OIL MIST FIBRE BED FILTER**  
A20FOM-0007



**5<sup>TH</sup> STAGE "HF" HEPA FILTER**  
95%                    2000HF-2095  
99.97%              2000HF-2099  
Carbon Canisters   CARB-0018



## Installation Accesories



### Suspension Bracket

ARO-400&ARO-600 099AMW-0001  
 ARO-1100&ARO-1400 099AMW-0002  
 ARO-2000 099AMW-0003



### Installation Kit

ARO-400 099AKI-0001  
 ARO-600& ARO-1100 099AKI-0002  
 ARO-1400 099AKI-0003  
 ARO-2000&ARO-2500 099AKI-0004



### Stand

32" Tall Powder coated black  
 Only for ARO-4000  
 099AMP-0004



### Wall Mount

ARO-400&ARO-600 099AMW-0001  
 ARO-1100&ARO-1400 099AMW-0002  
 ARO-2000 099AMW-0003



### Pillar Stand

ARO-400&ARO-600 099AMP-0061  
 ARO-1100&ARO-1400&AR  
 O-2000 099AMP-0062  
 ARO-2500 099AMP-0063

## Miscellaneous Accessories



### Chip Strainer

ARO-400&ARO-600 099ACS-0002  
 ARO-1100 099ACS-0005  
 ARO-1400 099ACS-0006  
 ARO-2000/2500 099ACS-0007



### Suction Hose

ARO-400 099MPH-0006  
 ARO-600/1100 099MPH-0008  
 ARO-1400 099MPH-0010  
 ARO-2000/2500 099MPH-0012



### Hose clamp

ARO 400 099AHC-0006  
 ARO 600/1100 099AHC-0008  
 ARO 1400 099AHC-0010  
 ARO 2000/2500 099AHC-0012



### Machine adapter

ARO 400 099AMS-0006  
 ARO 600/1100 099AMS-0008  
 ARO 1400 099AMS-0010  
 ARO 2000/2500 099AMS-0012



### Wire Kit

ARO 400/600 099EMS-E001  
 ARO 1100/1400 099EMS-E002  
 ARO 2000 099EMS-E003  
 ARO 2500 099EMS-E004  
 ARO 4000 099EMS-E005

## Replacement Parts

### Motor

Model	Voltage	
	230/460/3/60	575/3/360
ARO-400/600	099EMT-0002	099EMT-0003
ARO-1100/1400	099EMT-0010	099EMT-0011
ARO-2000	099EMT-0006	099EMT-0007
ARO-2500/4000	099EMT-0008	099EMT-0009



### Impeller

ARO-400 A04IMP-001  
 ARO-600/1100 A06IMP-001  
 ARO-1400/2000 A14IMP-001  
 ARO2500/4000 A25IMP-001



### Inlet cone

ARO 400 A04CON-0001  
 ARO 600/1100 A06CON-0001  
 ARO-1400/2000 A14CON-0001  
 ARO2500/4000 A25CON-0001



### Status Gauge

ARO-A031  
 ARO-2500 & ARO 4000 receive primary and HEPA status gauge

	ARO 400 & 600	ARO 1100 &1400	ARO 2000	ARO 2500	ARO 4000
<b>Motor Starter NEMA 12 Basic Start Stop</b>					
230/3/60	099EMS-1021	099EMS-1022	099EMS-1023	099EMS-1025	099EMS-1027
460/3/60	099EMS-1041	099EMS-1043	099EMS-1043	099EMS-1045	099EMS-1047
575/3/60	099EMS-1051	099EMS-1052	099EMS-1053	099EMS-1055	099EMS-1057
<b>Motor Starter NEMA 12 Basic Start Stop</b>					
230/3/60	099EMS-3021	099EMS-3022	099EMS-3023	099EMS-3025	099EMS-3027
460/3/60	099EMS-3041	099EMS-3043	099EMS-3043	099EMS-3045	099EMS-3047
575/3/60	099EMS-3051	099EMS-3052	099EMS-3053	099EMS-3055	099EMS-3057
<b>VFD Motor Starter, NEMA1</b>					
230/3/60	099EMS-2021	099EMS-2022	099EMS-2023	099EMS-2027	099EMS-1147
460/3/60	099EMS-2041	099EMS-2042	099EMS-2043	099EMS-2057	099EMS-1157
<b>VFD Motor Starter Panel, NEMA 12, Fused disconnect</b>					
230/3/60	099EMS-7021	099EMS-7022	099EMS-7023	099EMS-7025	099EMS-7027
460/3/60	099EMS-7041	099EMS-7042	099EMS-7043	099EMS-7045	099EMS-7047
575/3/60	099EMS-7051	099EMS-7052	099EMS-7053	099EMS-7055	099EMS-7057
<b>VFD Motor Starter, NEMA 4X, Programmed</b>					
230/3/60	099EMS-6021	099EMS-6022	099EMS-6023	099EMS-6025	N/A
460/3/60	099EMS-6041	099EMS-6042	099EMS-6043	099EMS-6045	099EMS-6047
575/3/60	099EMS-6051	099EMS-6052	099EMS-6053	099EMS-6055	099EMS-6057

## **BLOWBOX: COMPACT BLOW-OFF STATION WITH STRONG AIRFLOW**

The BlowBox is a compact, dual downdraft blow-off station that efficiently captures hazardous mist during part blow-off with compressed air. It features robust airflow, multi-stage filtration with a 95% HEPA filter, and a powerful motor, making it essential for maintaining clean air in industrial settings.





## BB-400

The BlowBox B-400 is a compact blow-off station designed to capture aerosolized mist during parts blow-off, promoting a clean workspace. Powered by a 0.3 hp motor, it delivers 400 CFM airflow with 95% HEPA filtration.

The unit features a scratch-resistant surface, LED lighting, and an optional stand. Its multi-stage system isolates 90% of mist and captures 95% of sub-micron particles. With a HEPA filter lifespan of 2–4 years, it provides long-lasting efficiency.

Ideal for clean and safe blow-off operations.

## PRODUCT SPECS

<b>Air Flow</b>	300-400 cfm
<b>Motor</b>	0.5 hp
<b>Voltage (Amps)</b>	115/1/60 (3.0)
<b>Sound</b>	74 dB(A)
<b>pH limit</b>	5.8 - 12

<b>Temp limit</b>	50 °C / 125 °F
<b>Length</b>	24"
<b>Width</b>	19"
<b>Height</b>	35" / 61" (with Stand)
<b>HEPA Filter</b>	Standard

# FILTERS

The BlowBox 400 utilizes a high-efficiency filter and reusable elements that effectively trap particulates, fumes and dust generated during various manufacturing processes. The filters offer effective filtration and minimal maintenance to optimize user productivity.

## REPLACEMENT FILTERS



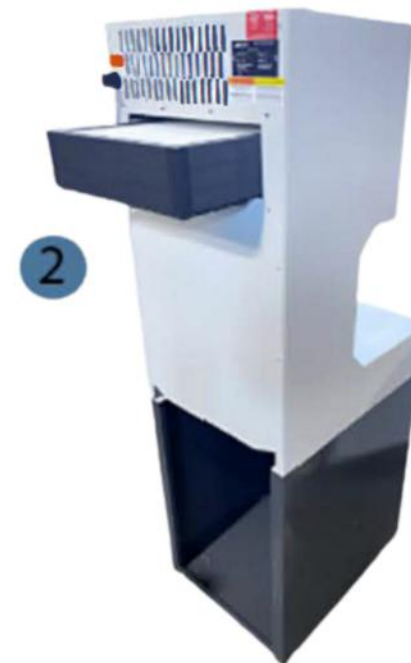
**1<sup>ST</sup> STAGE DEMISTER ELEMENT**  
MF55-F002



**OPTIONAL 4<sup>TH</sup> STAGE FILTER**  
4" HEPA 95%           MF55-F004  
8" HEPA 99.9%       MF55-F005

1. Demister Element: Using a fine mesh filament, the Demister Element supports the 1st stage by providing a higher efficiency separation to ensure up to 95% of the mist and swarf is removed with washable filters. A demister has a typical lifespan of 10–15 years.

2. 2nd Stage HEPA Filter: The HEPA filter comes in two variants: one with 95% efficiency at 0.3 microns and another with a higher efficiency rating of 99.97% at 0.3 microns. These filters are made with exclusive heavy-duty filter media, ensuring exceptional performance and longevity.



Along with its efficient filtration, the BlowBox 400 was designed with convenience in mind, boasting an array of features that improve overall productivity and maintenance. With its combined functionality, the BlowBox 400 is an indispensable tool for workshops.

**Control Switch:** The BlowBox comes equipped with a variable control switch that allows you to manage the level of suction needed for any task.

**Light:** A composite material engineered to deliver superior performance in sound insulation, durability, and ease of installation, with a flawlessly smooth finish. Rhino Board boasts scratch resistance, while strategically placed perforations enhance drainage efficiency.

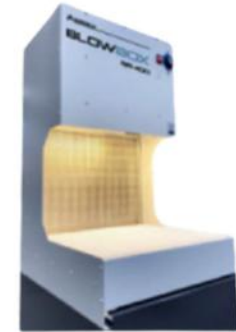
**Drainable Tray:** The drainable tray beneath the work table serves as a conduit between the work surface and the waste bin below, efficiently channeling excess liquids and particulates out of the workspace.

**Waste Compartment:** A convenient space for a waste bin to collect particulates and excess liquids, making it easy to remove from the working area.

CONTROL SWITCH



LIGHT



DRAINABLE TRAY



WASTE COMPARTMENT





## BB-500

The BlowBox BB-500 is a compact blow-off station engineered to capture dry smoke and airborne particulates during parts cleaning, keeping work areas clean and safe. Driven by a 0.75 hp motor producing more than 500 cfm of airflow, it captures mist, smoke, and fine particles directly at the source.

The BB-500 features a durable, scratch-resistant work surface, integrated LED lighting, and an optional stand for installation flexibility. Its multi-stage filtration system removes up to 90% of smoke, while activated carbon filters capture VOCs and fumes—delivering efficient, reliable performance for clean, effective blow-off operations.

## PRODUCT SPECS

<b>Air Flow</b>	500 - 600 cfm
<b>Motor</b>	0.75 hp
<b>Voltage (Amps)</b>	115/1/60 (4.9) 220/1/60 (2.5) 230/3/60 (1.57) 460/3/60 (0.95)
<b>Sound</b>	68 dB(A)
<b>pH limit</b>	5.8 -9.8
<b>Temp limit</b>	50 °C / 125 °F
<b>Length</b>	48"
<b>Width</b>	46"
<b>Height</b>	77"
<b>Carbon Filters</b>	Optional



**REPLACEMENT FILTERS**

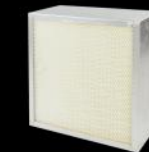
The BlowBox BB-500 uses high-efficiency fibrebed filtration with reusable elements to capture particulates, fumes, and dust generated during manufacturing processes. This design delivers effective filtration with low maintenance requirements, helping maximize uptime and productivity.



- 1. MECHANICAL ELEMENT
  - MF55-F001



- 2. DEMISTER ELEMENT
  - MF55-F002



- 3. 8" FIBREBED FILTER
  - MF55-F007



- 4. OPTIONAL CARBON FILTERS
  - CARB-0018

Along with high-efficiency filtration, the BlowBox BB-500 is designed for convenience, with features that improve productivity and simplify maintenance—making it an essential tool for modern workshops.

**Enclosed Workspace:** The blow-off station pulls smoke, dust, and mist away from the operator to maintain a clean, safe work environment. A generous work surface supports a wide range of tasks, while the protective viewing shield provides clear, close-up visibility with minimal contact.

**Rhino Board Surface:** This durable composite material delivers excellent sound insulation and long-lasting performance. Its smooth, scratch-resistant finish and strategically placed perforations enhance drainage and ease of use.

**Lighting:** Built-in lighting illuminates the work area for improved visibility, accuracy, and operator comfort during detailed tasks.

**Mobility:** Heavy-duty wheels allow the unit to be moved easily to where it's needed, providing flexibility without the limitations of a fixed installation.



## BB-1000

The BlowBox BB-1000 parts blow-off station provides a safe and clean work area for grinding and welding operations. Fumes, smoke, and non-combustible dust particles are effectively contained and kept away from the user's breathing zone, thanks to the evenly distributed airflow produced by the powerful ventilation system with 1,000 cfm of airflow.



### PRODUCT SPECS

<b>Air Flow</b>	900-1100 cfm
<b>Motor</b>	1.5 hp
<b>Voltage (Amps)</b>	230/3/60 (5.5) 460/3/60 (2.7)
<b>Sound</b>	69 dB(A)
<b>Weight</b>	310 lbs

<b>Length</b>	55"
<b>Width</b>	27"
<b>Height</b>	63"
<b>Construction</b>	16 & 22 gauge powder coated steel

The BlowBox 1000 utilizes high-efficiency fiber bed filters and reusable elements that effectively trap particulates, fumes, and dust generated during various manufacturing processes. The filters offer effective filtration and minimal maintenance to optimize user productivity.

**REPLACEMENT FILTERS**



**1<sup>ST</sup> STAGE MECHANICAL ELEMENT**  
MF10-F001



**2<sup>ND</sup> STAGE DEMISTER ELEMENT**  
MF10-F002

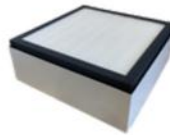


**3<sup>RD</sup> STAGE FIBRE BED FILTER**  
MF10-F007

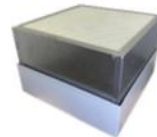


**OPTIONAL 4<sup>TH</sup> STAGE FILTER**  
4" HEPA 95%           MF10-F004  
8" HEPA 99.9%       MF10-F005  
8" ODR-RID FILTER   MF10-F009

**FILTER KITS**



**HEPA FILTER KIT 4" c/w HEPA FILTER 95%**  
MF10-F011



**HEPA FILTER KIT 8" c/w HEPA FILTER 99.9%**  
MF10-F012

**OPTIONAL FILTERS**



**CARBON CANISTERS**  
CARB-0018



Along with its efficient filtration, the BlowBox 88-1000 was designed with convenience in mind, boasting an array of features that improve overall productivity and reduce maintenance. With its combined functionality, the BlowBox 1000 is an indispensable tool for workshops.

**Spacious Workspace:** The BlowBox 1000 is equipped with a large work area capable of holding large or multiple parts at once, ultimately increasing the efficiency of any cleaning process. The partially enclosed walls prevent spray from escaping, while excess liquids and particulates are filtered down to the bottom of the workspace.

**Rhino Board Surface:** A composite material engineered to deliver superior sound insulation, durability, and ease of installation. Featuring a flawlessly smooth finish, Rhino Board is scratch-resistant and includes strategically placed perforations that enhance drainage efficiency.

**Drainable Tray:** Located beneath the work table, the drainable tray serves as a conduit between the Mist-Filt system and the work surface, efficiently channeling excess liquids and particulates out of the workspace. With the integrated drain, waste can be directed into a sump or waste container.

**Wheels:** A set of heavy-duty wheels allows users to maneuver the unit to any desired location for optimal use, eliminating the constraints of fixed positioning and adapting seamlessly to the environment.

SPACIOUS  
WORKPLACE

DRAINABLE TRAY



RHINO BOARD



CASTERS

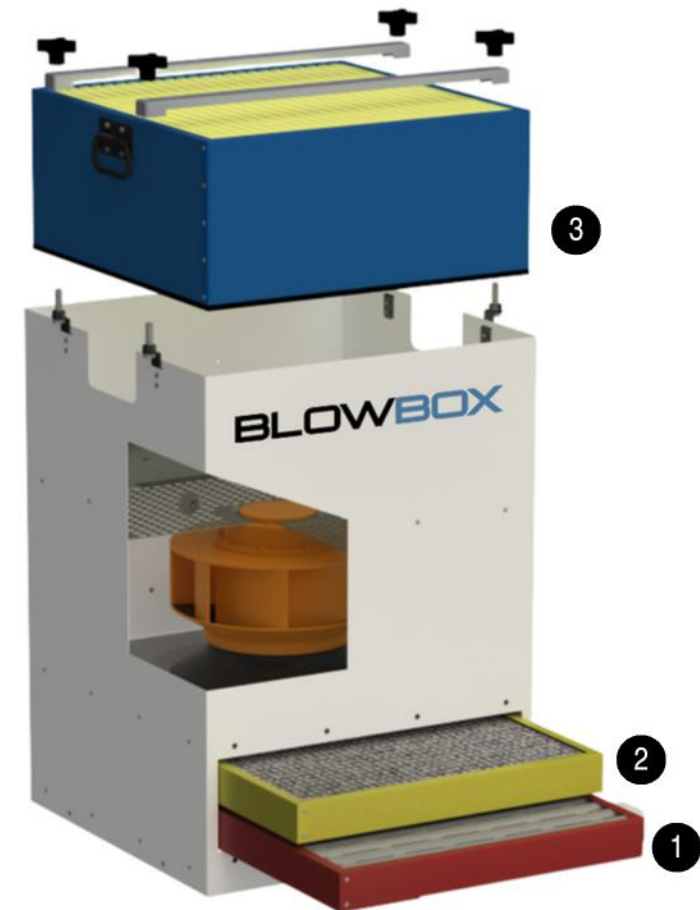


The BlowBox BB-1000 utilizes a progressive multi-stage separation process that provides longer operating cycles with less media replacement and maintenance while providing optimal efficiency in applications including oil or coolant mist, fine smoke and more. Filter assortments include non-consumable filters with the ability to drain mist and other liquid particulate out of the table and a depth loading fiber bed filter for efficient filtration of finer particulate.

**1. 1st Stage “ME” Mechanical Element:** Features a washable metal surface, separating 90% of oil mist and swarf for drainage. With a 20-year durability, it prevents clogging in subsequent filters by handling larger particles.

**2. Demister Element:** Using a fine mesh filament, the Demister Element supports the 1st stage by providing a higher efficiency separation to ensure up to 95% of the mist and swarf is removed with washable filters. A demister has a typical lifespan of 10–15 years.

**3. 3rd Stage Depth Loading Fiber Bed Filter:** Outclasses thin competitors with its thick composition, minimizing blockage and boosting efficiency. Built for longevity with a 1–3 year lifespan.



## BB-2000

The BlowBox BB-2000 parts blow off station provides a safe and clean work areas for grinding and welding operations. Fumes, smoke and non-combustible dust particles are effectively contained and kept away from the users breathing zone thanks to the evenly distributed airflow produced by the powerful ventilation system with up to 2200cf m of airflow.



### PRODUCT SPECS

<b>Air Flow</b>	1900 - 2200 cfm
<b>Motor</b>	3 hp
<b>Voltage (Amps)</b>	230/3/60 (5.5) 460/3/60 (2.7)
<b>Sound</b>	72 dB(A)
<b>Weight</b>	560 lbs

<b>Length</b>	48"
<b>Width</b>	53"
<b>Height</b>	76"
<b>Construction</b>	16 & 22 gauge powder coated steel

The BlowBox BB-2000 utilizes high-efficiency fiber bed filters and reusable elements that effectively trap particulates, fumes, and dust generated during various manufacturing processes. The filters provide reliable filtration and require minimal maintenance, helping to optimize user productivity.

**REPLACEMENT FILTERS**



**1<sup>ST</sup> STAGE MECHANICAL ELEMENT**  
MF19-F001



**2<sup>ND</sup> STAGE DEMISTER ELEMENT**  
MF19-F002

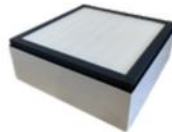


**3<sup>RD</sup> STAGE FIBRE BED FILTER**  
MF19-F007

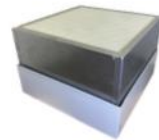


**OPTIONAL 4<sup>TH</sup> STAGE FILTER**  
4" HEPA 95% MF19-F004  
8" HEPA 99.9% MF19-F005  
8" ODR-RID FILTER MF19-F009

**FILTER KITS**



**HEPA FILTER KIT 4" c/w HEPA FILTER 95%**  
MF19-F011



**HEPA FILTER KIT 8" c/w HEPA FILTER 99.9%**  
MF19-F012

**OPTIONAL FILTERS**



**CARBON CANISTERS**  
CARB-0018



Along with its efficient filtration, the BlowBox 2000 was designed with convenience in mind, boasting an array of features that improve productivity and simplify maintenance. With its combined functionality, the BlowBox 2000 is an indispensable tool for workshops.

**Enclosed Workspace:** A parts blow-off station designed to enhance workshop productivity and safety by efficiently filtering smoke, dust, and mist. It pulls contaminants away from the user, ensuring a clean working environment. The ample surface area accommodates various project sizes and types, offering versatility for a wide range of tasks. The protective viewing shield provides a clear, detailed perspective of your work with minimal contact, ensuring both safety and precision.

**Rhino Board Surface:** A composite material engineered for superior performance in sound insulation, durability, and ease of installation. With its smooth, scratch-resistant finish, Rhino Board ensures long-term reliability. Strategically placed perforations improve drainage efficiency, further enhancing functionality.

**Chip Compartment:** A practical addition that efficiently collects small debris for easy cleanup. The accessible drawer design makes disposal simple, while the built-in screen drains liquids effectively, maintaining both cleanliness and functionality.

**Electrical Panel:** A pre-installed control panel with customizable automation features, including options for manual shut-off, continuous operation, or automatic start. When the air gun is lifted, an automatic trigger activates the machine. The ambidextrous-friendly design allows the automatic start feature to be configured for either left- or right-side gun holders. The panel also includes a dedicated light switch for independent lighting control, improving visibility during operation and conserving energy when lighting is not needed.

**Wheels:** A set of heavy-duty wheels enables users to easily maneuver the BlowBox 2000 to any desired location, avoiding the limitations of fixed placement and ensuring optimal usability.

ENCLOSED  
WORKSPACE

WASTE DRAWER

ELECTRICAL  
PANEL

CASTERS



The BlowBox BB-2000 utilizes a progressive multi-stage separation process that provides longer operating cycles with less media replacement and maintenance while providing optimal efficiency in applications including oil or coolant mist, fine smoke and more. Filter assortments include non-consumable filters with the ability to drain mist and other liquid particulate out of the table and a depth loading fiber bed filter for efficient filtration of finer particulate.

**1. 1st Stage “ME” Mechanical Element:** Features a washable metal surface, separating 90% of oil mist and swarf for drainage. With a 20-year durability, it prevents clogging in subsequent filters by handling larger particles.

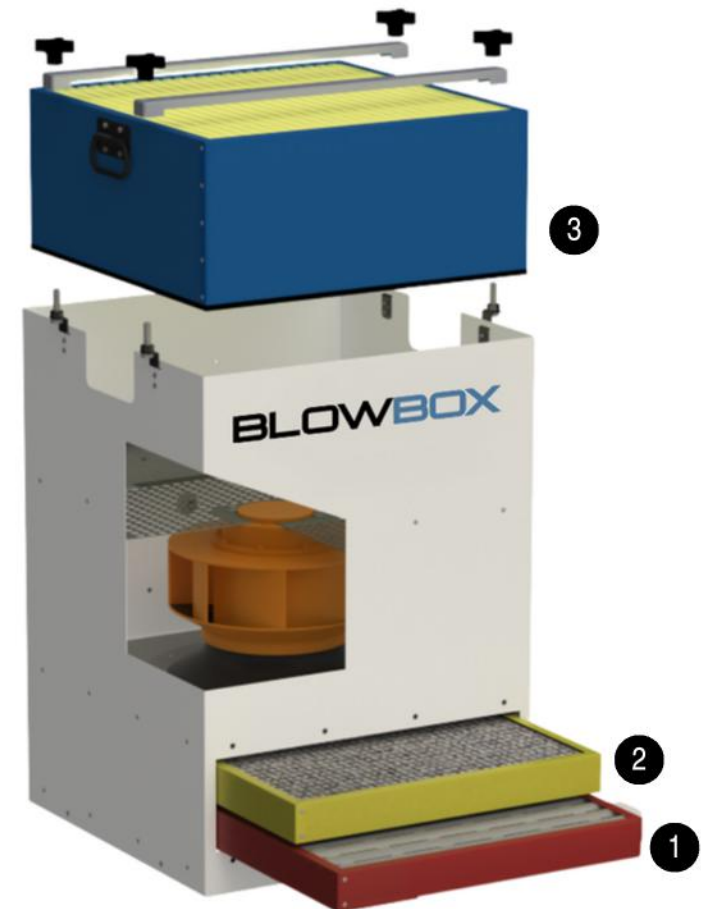
**2. Demister Element:** Using a fine mesh filament, the Demister Element supports the 1st stage by providing a higher efficiency separation to ensure up to 95% of the mist and swarf is removed with washable filters. A demister has a typical lifespan of 10–15 years.

**3. 3rd Stage Depth Loading Fiber Bed Filter:** Outclasses thin competitors with its thick composition, minimizing blockage and boosting efficiency. Built for longevity with a 1–3 year lifespan.

**4. Optional HEPA Filter:** This certified medical grade HEPA filter captures sub-micron oil smoke and bacteria. We offer 2 optional HEPA filter variants:

95% HEPA Filter: HEPA filters rated at 95% @ 0.3 microns are standard for coolant applications.

99.97% HEPA Filter: HEPA filters rated 99.97% @ 0.3 microns are standard for oil applications.



## AMBIENT AIR SOLUTIONS: COMPACT AIR FILTRATION FOR LOCALIZED OR CENTRAL APPLICATIONS

Our Ambient Air Solutions deliver high-efficiency filtration that continuously cleans the air in industrial spaces, removing mist, smoke, and airborne contaminants to create a safer, healthier work environment without disrupting operations.



# AIR-FIT 500

Air-Fit fan filter units are compact, ceiling-mount air purification systems designed for use in cleanrooms, pharmaceutical manufacturing facilities, laboratories, and pharmacies. The Air-Fit 500 is equipped with a HEPA filter with an efficiency rating of 99.99% at 0.3 µm, delivering high volumes of HEPA-filtered air.



## PRODUCT SPECS

Air Flow	500 - 600 cfm
Motor	0.75 hp
Voltage (Amps)	115/1/60 (4.9)
Sound	59 dB(A)
Weight	90 lbs
Length	23"
Width	23"
Height	20"

## REPLACEMENT FILTERS

- 1<sup>ST</sup> STAGE PRE-FILTER 2<sup>ND</sup> STAGE HEPA FILTER
- AF10-F001 MF10-F005

# IRIS-2000

The IRIS-2000 is an industrial air filtration system designed for ambient air cleaning and the removal of mist, smoke, and airborne pollutants. It features a progressive three-stage filtration system that combines mechanical separation, fibre-bed depth filtration, and a certified HEPA filter with 99.97% efficiency at 0.3 microns.



## PRODUCT SPECS

Air Flow	1800 - 2200 cfm
Motor	2 hp
Voltage (Amps)	230/3/60 (5.5) 460/3/60 (2.7) 575/3/60 (2.2)
Sound	70 dB(A)
Inlet Connection	12" Ø
Fan	Backward curved centrifugal fan

Weight	310 lbs
Length	46"
Width	24"
Height	27"

## REPLACEMENT FILTERS

- 1<sup>ST</sup> STAGE DEMISTER ELEMENT 2<sup>ND</sup> STAGE PLEATED DEPTH LOADING FIBREBED FILTER 3<sup>RD</sup> STAGE HEPA FILTER
- A20FDE-0002 A20FCM-TH04 MF19-5005

# IRIS-400

The IRIS-400 is a compact, portable air filtration system designed for both localized and central applications. It features a high-performance dual-stage odor-control MERV 8/carbon primary filter, followed by a HEPA filter with 99.97% µm efficiency for exceptional air purification.



## PRODUCT SPECS

Air Flow	300 - 400 cfm
Motor	0.5 hp
Voltage (Amps)	115/1/60 (3.0)
Sound	59 dB(A)
Weight	65 lbs
Length	15"
Width	15"
Height	33"

## REPLACEMENT FILTERS

- 1<sup>ST</sup> STAGE CARBON FILTER 2<sup>ND</sup> STAGE HEPA FILTER
- IR60-F010 MF55-F005

# IRIS-4500

The IRIS-4500 is a central air purification system featuring a non-consumable pre-filter, a dual-stage high-performance MERV 8/carbon primary filter for effective odour control, and a secondary HEPA filter rated at 99.97% efficiency at 0.3 microns.



## PRODUCT SPECS

Air Flow	4000 - 5000 cfm
Motor	7.5 hp
Voltage (Amps)	230/3/60 (17.0) 460/3/60 (8.1) 575/3/60 (6.8)
Sound	74 dB(A)
Weight	1000 lbs
Construction	12-gauge & 16-gauge powder coated steel

## REPLACEMENT FILTERS

- 1<sup>ST</sup> STAGE DEMISTER ELEMENT 2<sup>ND</sup> STAGE CARBON FILTER 3<sup>RD</sup> STAGE HEPA FILTER
- A20FDE-0002 A20FCM-0010 2000HF-2099



**AEROEX TECHNOLOGIES**  
717 Bayview Dr.  
Barrie, ON L4N 9A5

**AEROEX U.S.A.**  
10585 47<sup>th</sup> St. N.  
Clearwater, FL 33762

Aeroex.com  
866-392-9222  
sales@aeroex.com  
orderdesk@aeroex.com